



SINCE 1986

- ▲ SEA PORT
- ▲ DRY PORT INDUSTRY
- ▲ RAIL PORT
- ▲ OFFSHORE WIND



General Assembly

Athens , 05 April, 2019

Germany`s northeastern-most deepwater port at the Baltic Sea



ISO zertifiziert
ISPS - Standard



Mukran Port

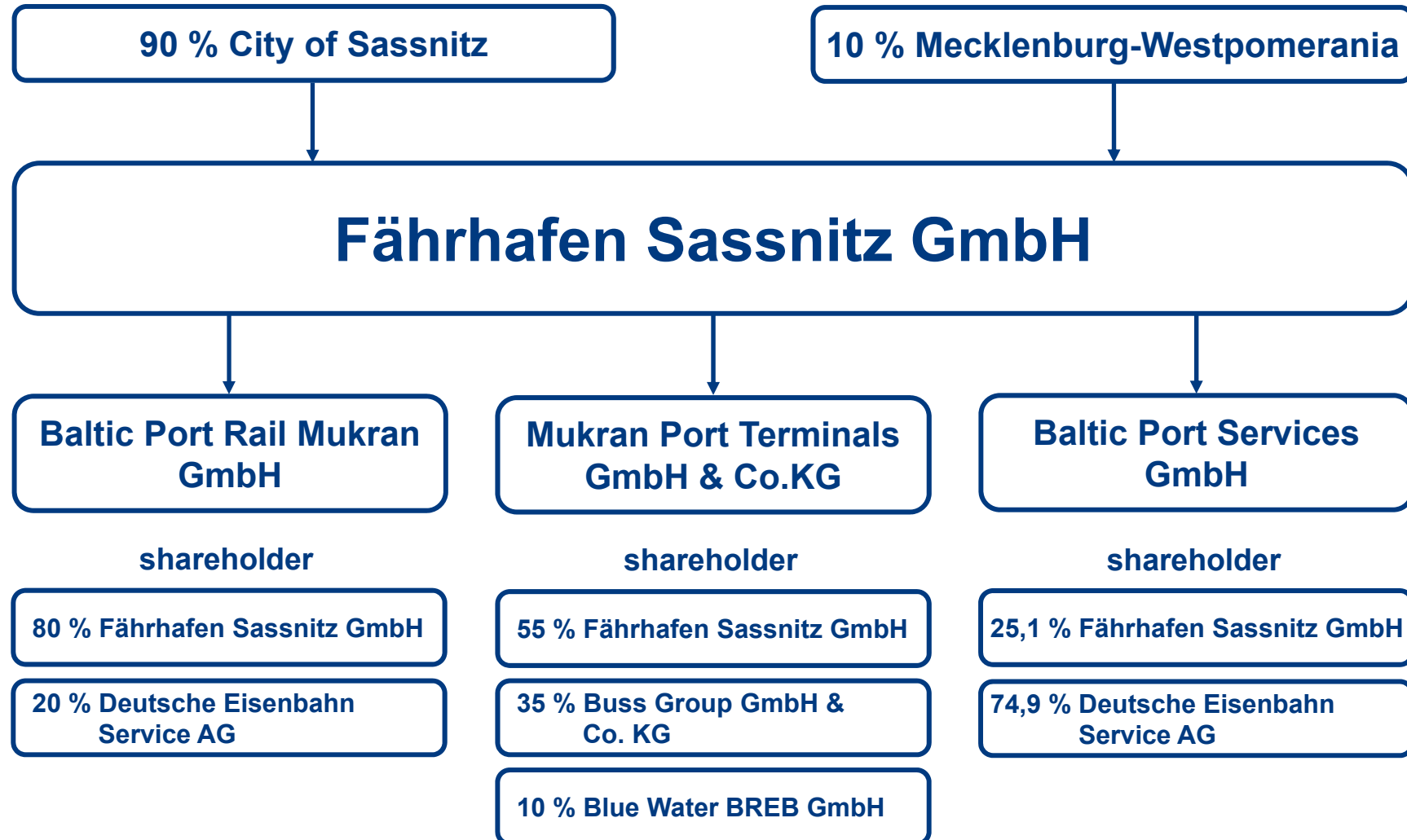
business areas

- ▲ SEA PORT
- ▲ DRY PORT INDUSTRY
- ▲ RAIL PORT
- ▲ OFFSHORE WIND



Mukran Port

shareholders structure



Mukran Port

Mukran Port Terminals GmbH & Co. KG



- handling of bulk, piece and heavy cargo, project cargo and container handling
- warehouse logistics
- consulting and handling of logistics chains



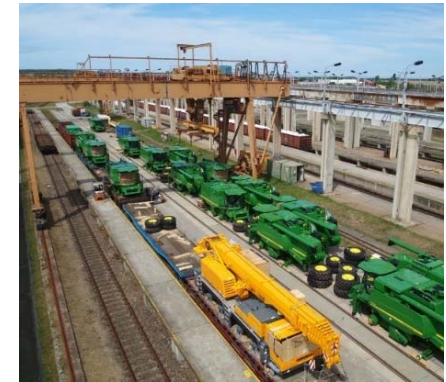
Mukran Port

Baltic Port Rail Mukran GmbH

■ SEA PORT
 ■ DRY PORT INDUSTRY
 ■ RAIL PORT
 ■ OFFSHORE WIND



- shunting services normal and wide gauge
- wagon technical investigations
- clearance
- logistic services



Baltic Port Rail Mukran

References



Mukran Port

Baltic Port Services GmbH

- SEA PORT
- DRY PORT INDUSTRY
- RAIL PORT
- OFFSHORE WIND



- maintenance, repair and maintenance of rolling stock and port handling equipment



- circumferential axis from 1,520 mm to 1,435 mm gauge and vice versa



Mukran Port

„one-stop-shopping“

for your successful corporate development at the site

Fährhafen Sassnitz GmbH

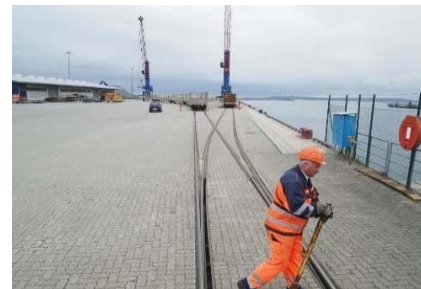
- settlement and project management
- power supply by port network

Mukran Port Terminals GmbH & Co. KG

- consulting and handling of logistics chains
- handling and warehouse logistics

Baltic Port Rail Mukran GmbH

- rail logistics at the site & beyond
- shunting and transport services



Mukran Port

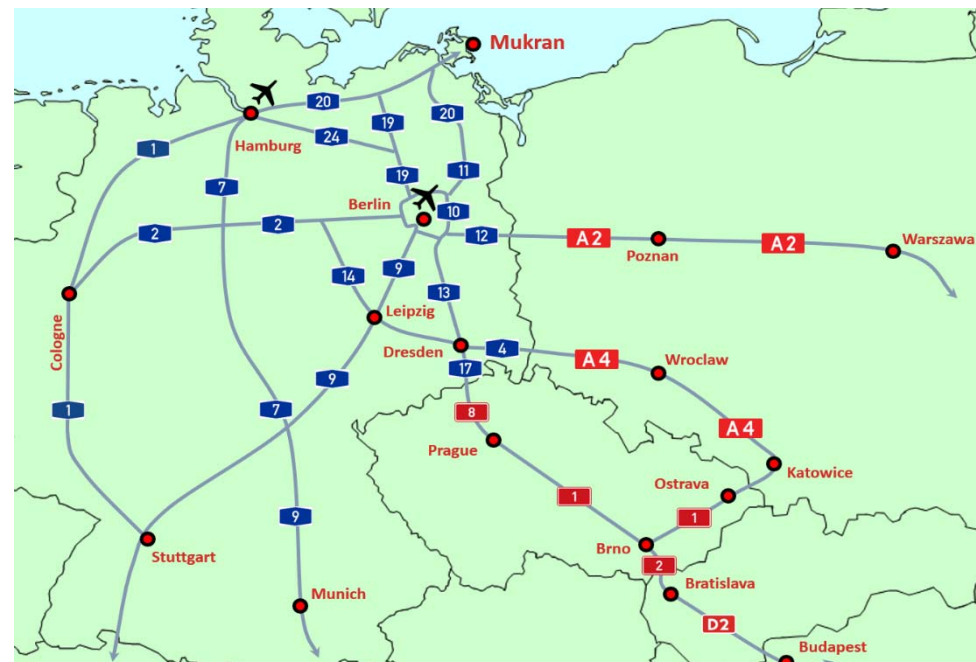
transport links and logistics

- SEA PORT
- DRY PORT INDUSTRY
- RAIL PORT
- OFFSHORE WIND

- excellent transport links by rail, sea and road
- ferry service to Scandinavia and Russia / Baltics
- short-Sea-Traffic between Baltic and North Sea (tailored to needs of industry)
- direct access from the settlement area to the quayside
- heavy load quay (berth 10) with a depth of 12.50 m
- logistics at the location without use of public roads



Rail and road links



Road links

Mukran Port

advantages

- ▲ SEA PORT
- ▲ DRY PORT INDUSTRY
- ▲ RAIL PORT
- ▲ OFFSHORE WIND



- ideal position directly at the open sea
- shortest sea distances from Germany to Sweden, Denmark/Bornholm, Russia, Finland and the Baltic states
- uncomplicated approach
- no channel navigation
- no obligation for pilot services
- the only port in Europe which can handle Russian broad gauge rail cars
- wide range of options for extension, development and establishment of port related business and industries
- predestined as Base Port for Offshore Industry Projects

Mukran Port

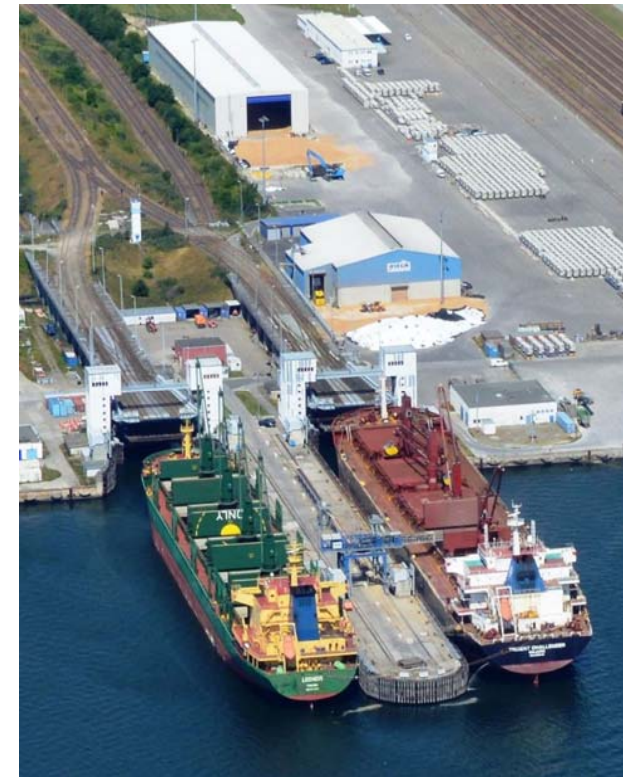
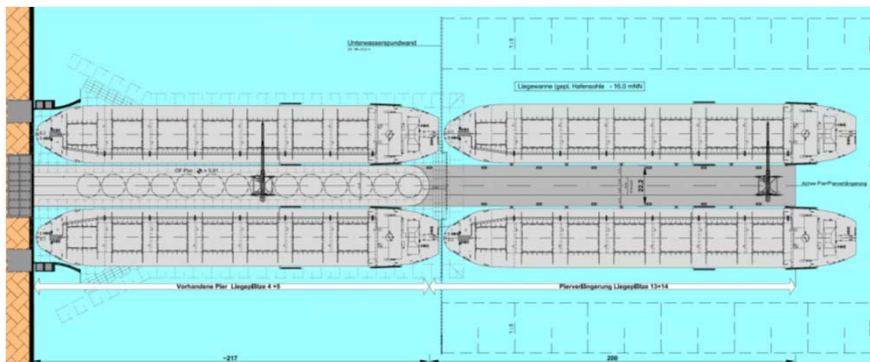
references settlement management

- ▲ SEA PORT
- ▲ DRY PORT INDUSTRY
- ▲ RAIL PORT
- ▲ OFFSHORE WIND

Grain terminal – Viela & BayWa



- import & export, storage & transhipment of cereals & agricultural products
 - load-in by train, truck and feeder ship
 - load-out by sea ship
- ✓ handling of Panamax ships & handling capacity up to 2 million t per year

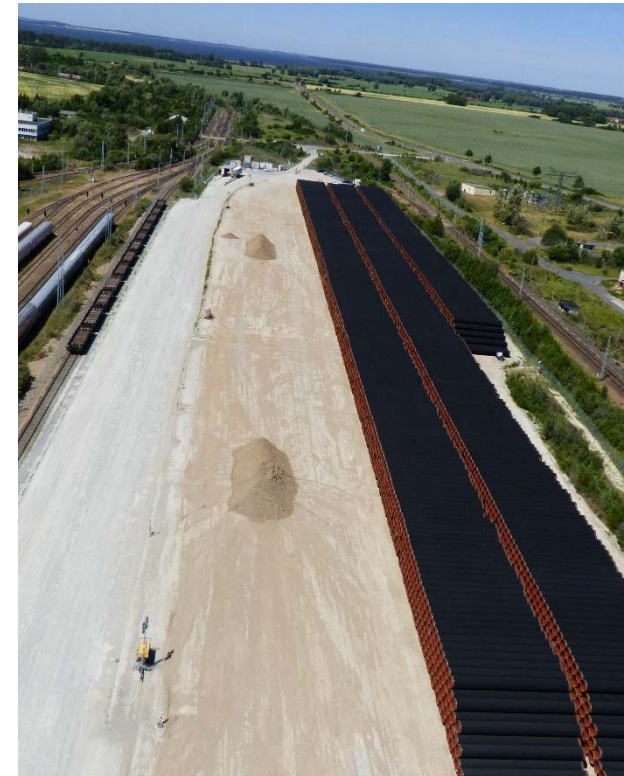


Mukran Port

references project management

Nord Stream Pipeline– EUPEC (2009-2011) and WASCO (2017-2020)

- load-in, Coating, Load-out of 120,000 and 90,000 Rohren for the pipeline 1•2 and 3•4
- load-in by Bahn, Load-out by Schiff



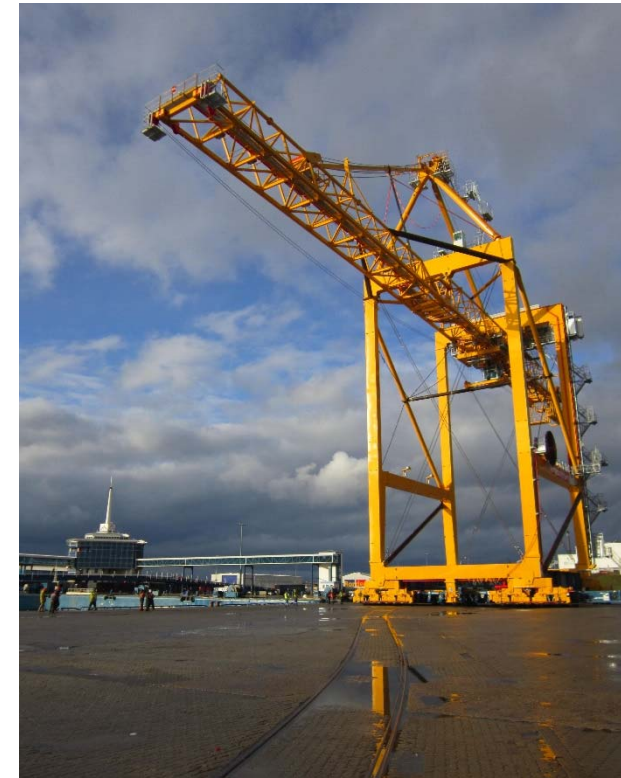
Mukran Port

references project management

Container bridges – Liebherr (2012)

- final assembly of 3 gantry cranes - with a height of 63 m
 - delivery of components from Ireland
 - delivery by pontoon to St. Petersburg
- ✓ assembly site for project cargo

LIEBHERR



Prototyping – EUROS (2012-2014)



- manufacturing prototype wings for wind turbines
- production of 7 long rotor blade prototypes, approx. 80 meters, for offshore wind farms (Asia)



Business park

Dry Port Mukran

Flexibility of the total area by existing rail infrastructure

- Open space and hall capacity for warehouses, production & logistics with rail-related purchases or cargo for port
- Office and social units for industry, trade and service providers



Managing Director Fährhafen Sassnitz GmbH

Harm Sievers

phone +49 (0) 38392 55210

mobile +49 (0) 171 6425570

e-mail: sievers@mukran-port.de

Managing Director Baltic Port Rail Mukran GmbH

Tino Gerschler

phone +49 (0) 38392 55354

mobile +49 (0) 173 6041091

e-mail: gerschler@mukran-rail.de