



www.francescoparisi.com

FRANCESCO PARISI GROUP

Freight Forwarding and logistics since 1807



IBS Congress
Trieste, 17.10 and 18.10.2019



MAIN DIVISIONS

❑ FREIGHT FORWARDING & LOGISTICS

- ✓ maritime / road / rail freight
- ✓ air freight
- ✓ intermodal transport
- ✓ contract logistics
- ✓ warehousing & distribution
- ✓ customs clearing agent

❑ SHIPPING AGENCY

- ✓ liner
- ✓ tramp
- ✓ brokerage

❑ INFRASTRUCTURE MANAGEMENT

- ✓ marine terminal operations
- ✓ rail intermodal terminal operation
- ✓ warehouse management

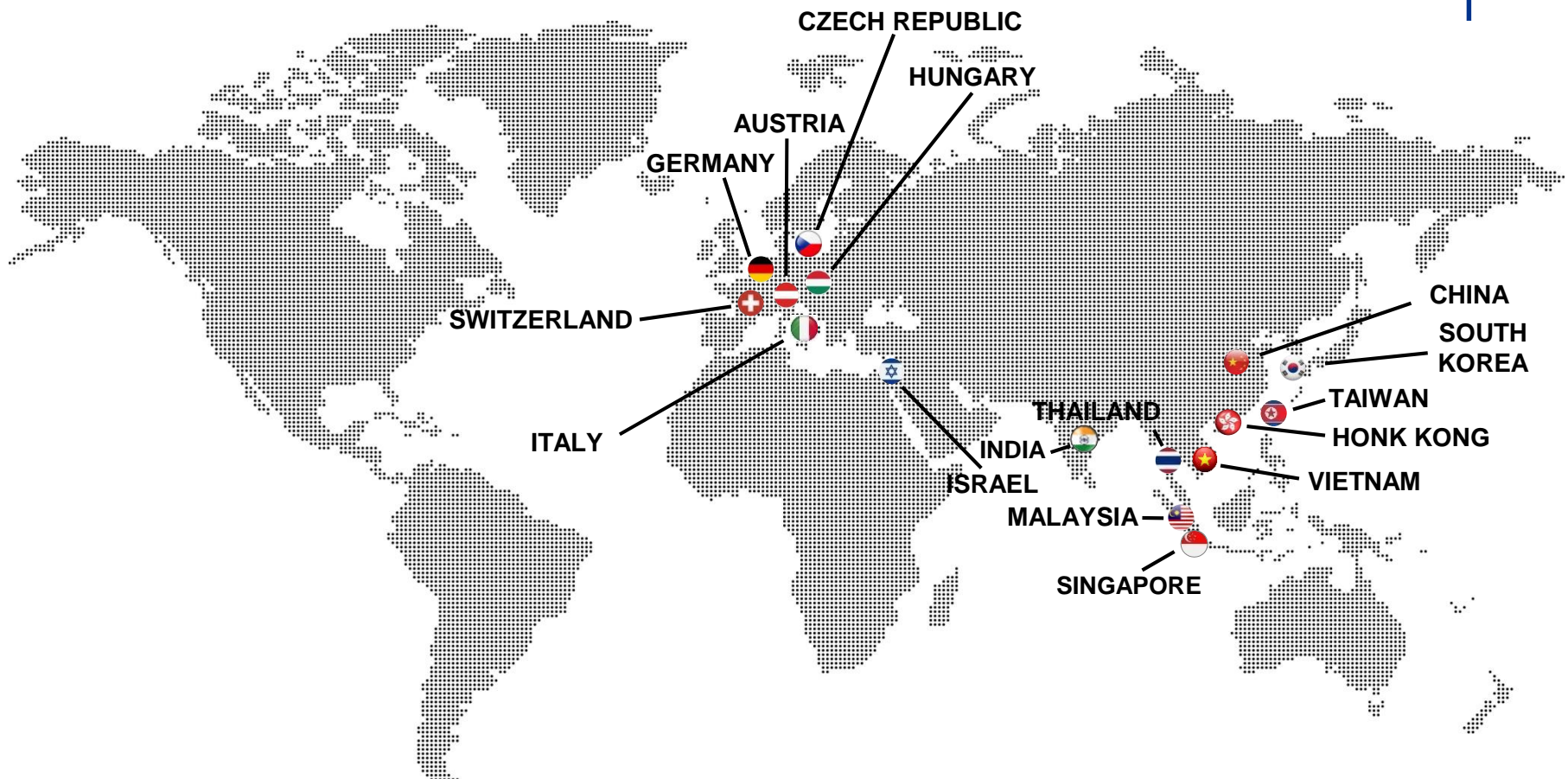


THE GROUP IN ITALY

- ❑ **Francesco Parisi S.a.s.**
Holding and Group Services
- ❑ **Francesco Parisi Casa di Spedizioni S.p.A.**
Freight Forwarding
- ❑ **Agenzie Marittime Riunite S.r.l.**
Shipping Agency and Brokerage
- ❑ **PSM Logistica S.r.l.**
Contract Logistics
- ❑ **Piattaforma Logistica Trieste S.r.l.**
Marine Terminal Construction & Operation
- ❑ **Docks San Servolo S.r.l. / General Cargo Terminal S.p.A.**
Marine Terminals Operation

200 management and staff members employed in Italy

NETWORK OF GROUP OFFICES: 800 employees in 16 countries





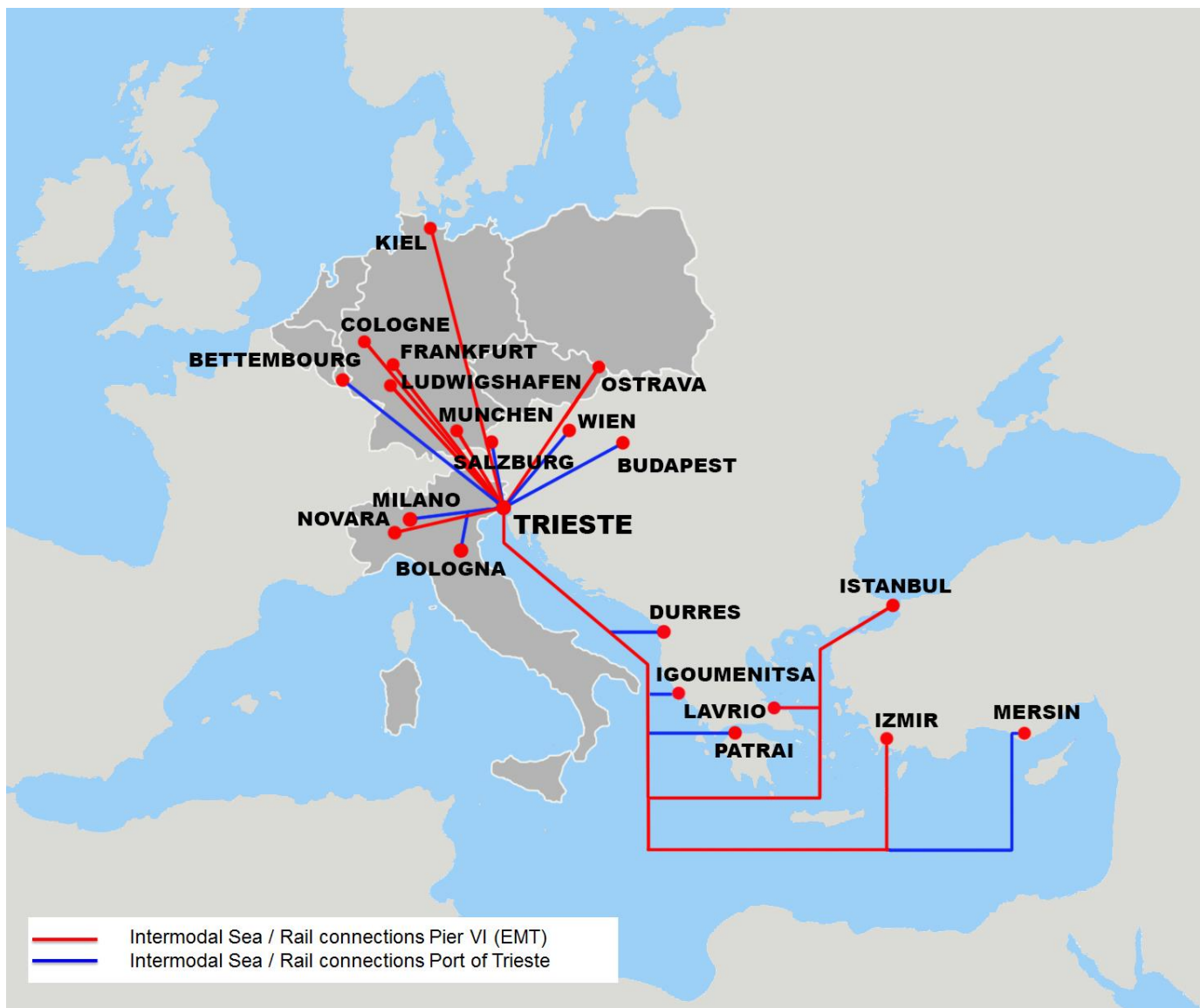
Pier 6 in 2009



Pier 6 in 2009



	N. Vessel	N. ITU	Pairs Train	N. ITU (FEU)	% Intermodal
2011	110	37.051	245	14.833	40%
2012	113	42.066	378	22.578	53%
2013	247	79.905	938	53.106	66%
2014	151	64.450	1.251	68.495	106%
2015	182	80.761	1.361	71.004	88%
2016	203	93.331	1.399	73.907	79%
2017	235	102.415	1.125	64.469	62%



Intermodal links: 2014-2018 network and strategic partnerships with inland platforms

- 2014 network
- 2014-2018 development
- under development
- 3 weekly trains (roundtrips)

Buttembourg
+50% (2014-2018)

München
+160% (2014-2018)

Wels
+130%
(2014-2018)

Trieste



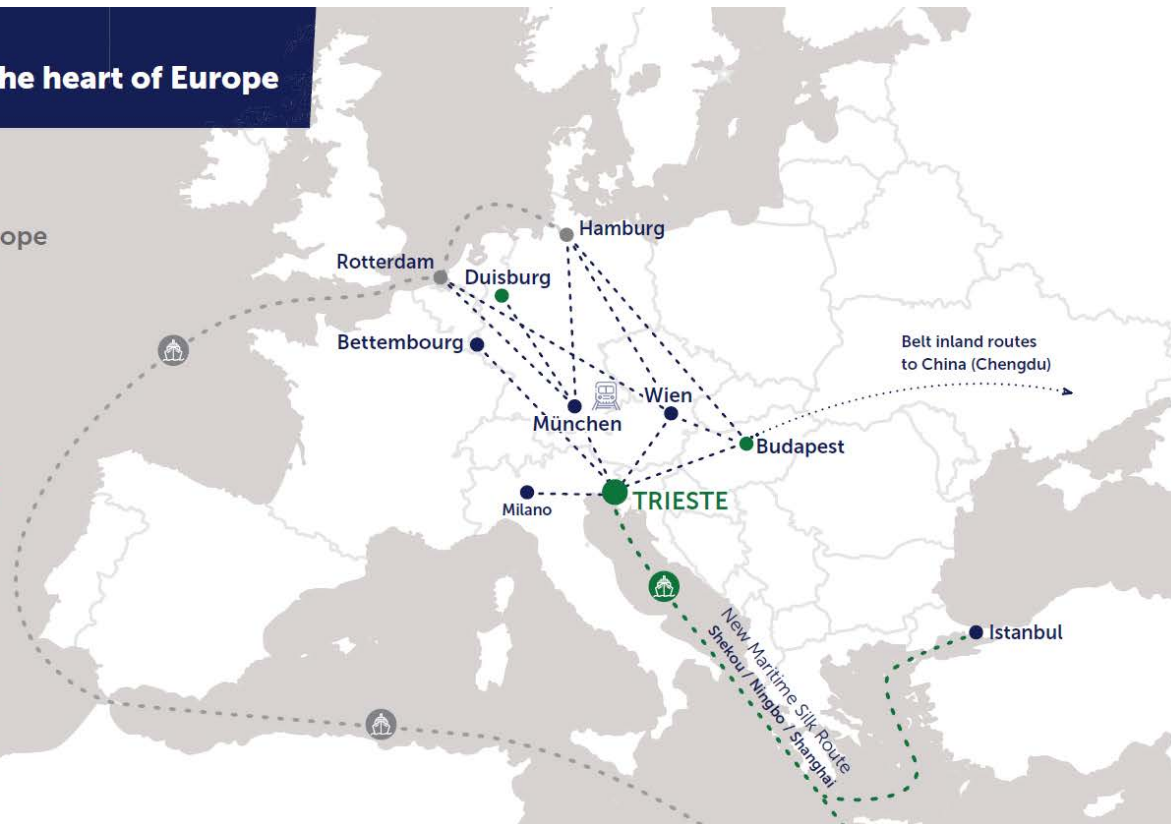
Autorità di Sistema Portuale
del Mare Adriatico Orientale
Porti di Trieste e Montebelluna

Trieste: your gateway in the heart of Europe

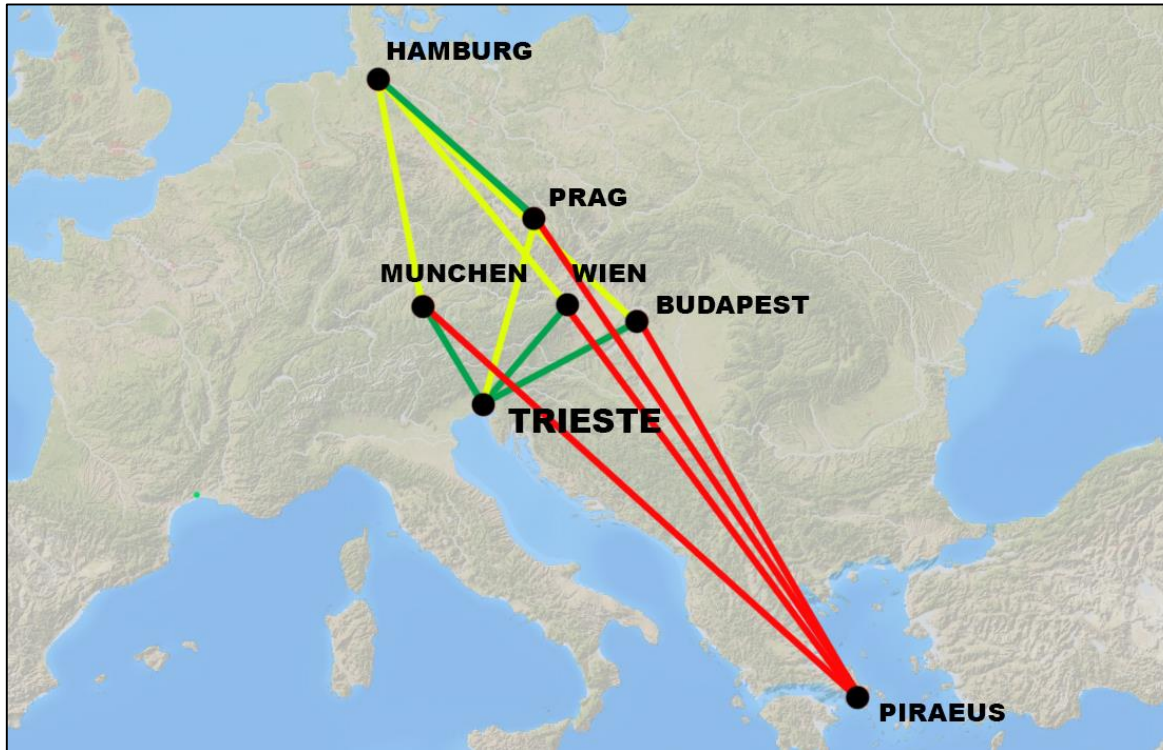
Suez >> Northern Europe
distance: 3,539 miles
days of navigation: 7

Suez >> Trieste
distance: 1,287 miles
days of navigation: 3

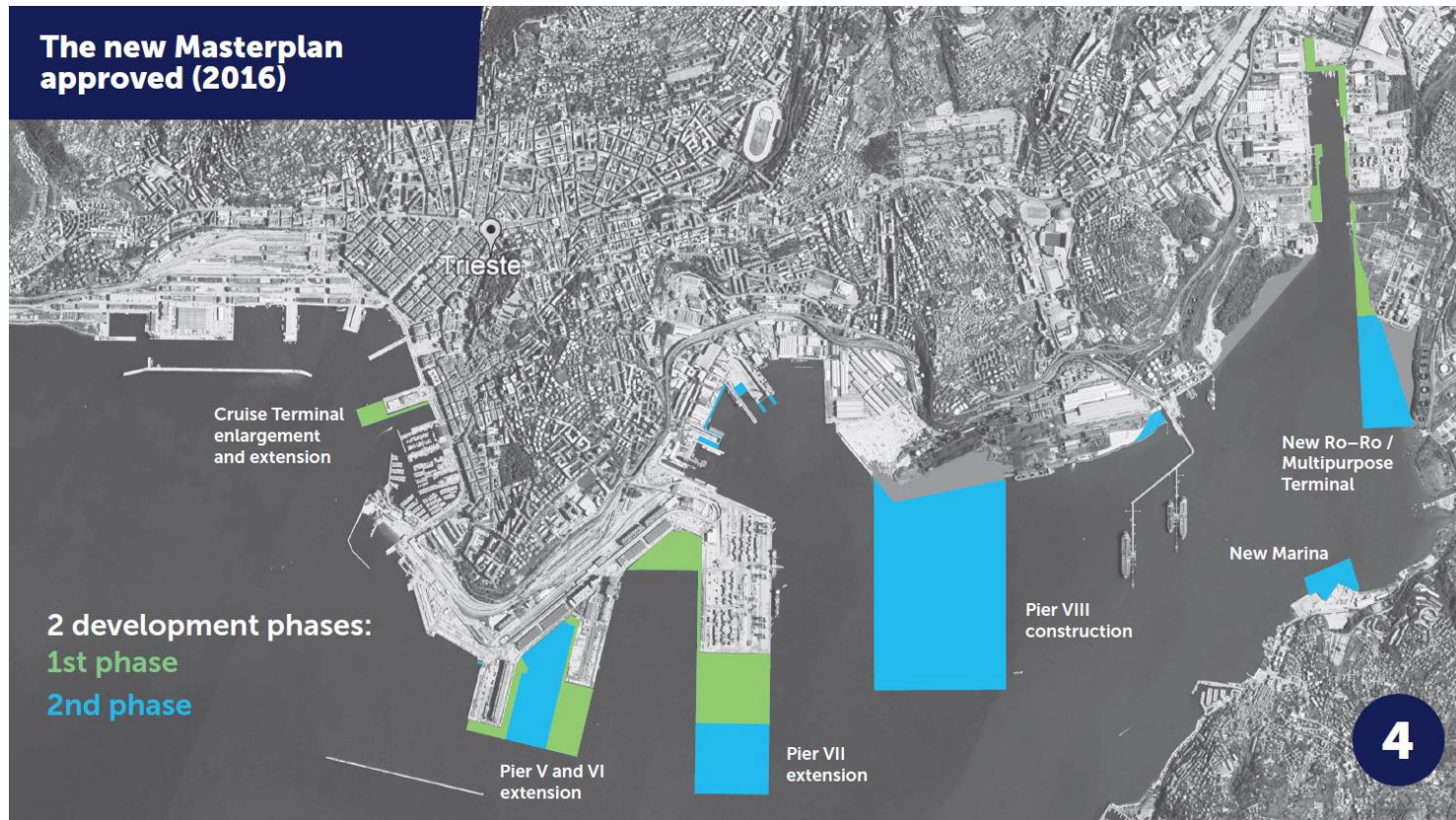
Gain via Trieste:
distance: 2,252 miles
days of navigation: 4



❑ Rail distances in km from the following Sea Ports



	Trieste	Hamburg	Piraeus
Vienna (A)	480	870	1.860
Munich (DE)	510	750	2.260
Budapest (HU)	610	1.140	1.610
Prag (CZ)	810	670	2.190





- ❑ A new Terminal in the Trieste Port to accomodate growing demand
- ❑ Public Private Partnership Project via a competitive had awarded on 1st September 2014 to a Consortium beetween:
 - I.CO.P S.p.A. Basiliano (UD): Construction Co.
 - Cosmo Ambiente S.r.l. Noale (VE): Construction Co.
 - Francesco Parisi Casa di Spedizioni S.p.A. Trieste (TS): Logistic Operator
 - Interporto di Bologna S.p.A. Bologna (BO): Infrastructure Manager
- ❑ Construction started Dicember 2015 and expected to be completed in June 2020
- ❑ 122.700 sqm with 480 m long berth, 14m draft
- ❑ 30 years concession after construction (2020 – 2050)



- ❑ Since May 2017 PLT shareholders have acquired control of adjacent Terminal operator GCT S.p.A.
- ❑ Connecting the two facilities will allow
 - ❑ better layout of rail junction
 - ❑ additional berth
 - ❑ a total area of 28 hectares

Working phases/progress



The new Multipurpose Terminal in the Port of Trieste to accommodate growing demand and to become the future interchange platform between sea / rail on intersection of Baltic / Adriatic and Mediterranean railway.

■ Technical Data

Terminal:

Containers, Ro Ro, General and Project cargo

Total Area:

270.000 sqm (54.500 sqm covered areas)

Berths:

Ro Ro / Con Ro / Container / General Cargo

Length of berths: 360 m + 455 m

Draft: 9 m - 14 m

Rail Tracks: 4 x 300 m

■ Theoretical Capacity

300.000 TEU

6 x daily train circulations





GENERAL CARGO TERMINAL S.p.A.

MAIN SERVICES

❑ **TIMBER & FOREST PRODUCTS**

- ✓ Storage for valuable export timber
- ✓ Logo and headside painting
- ✓ Anti-stain treatment

❑ **METALS**

- ✓ Handling & Storage for non-ferrous metals from ships' hold to warehouse and vice versa
- ✓ Transfer by truck/container

❑ **STORAGE**

- ✓ 90.000 sqm's warehouses and sheds

❑ **STUFFING / UNSTUFFING**

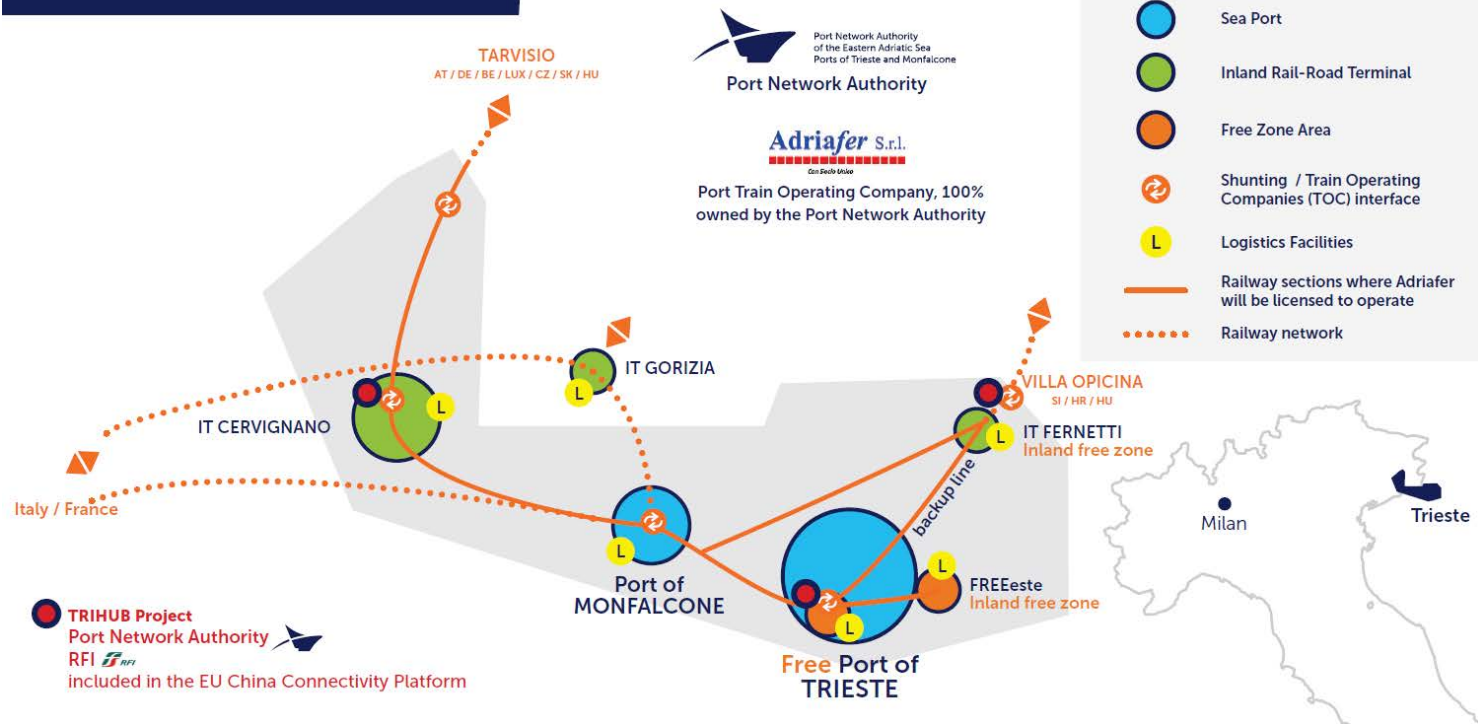
- ✓ loading / unloading from containers to trucks and vice versa
- ✓ import / export groupage activities

❑ **SEA SERVICES / SHIPPING**

- ✓ Maritime services for all Mediterranean and Black Sea ports.
- ✓ Passenger / cargo ferry service to/from Albania



Port Integrated Trimodal Comprehensive Hub



TRIHUB Project
Port Network Authority
RFI included in the EU China Connectivity Platform

Port Network Authority
of the Eastern Adriatic Sea
Ports of Trieste and Monfalcone

Adriafer S.r.l.
Consorzio Unico
Port Train Operating Company, 100%
owned by the Port Network Authority

INTERPORTO CERVIGNANO



INTERPORTO CERVIGNANO



■ Equipment

- 3 Reachstackers, 2 with piggy-back
- Terminal tractors
- Fork lifts
- 1 Terminal Diesel Locomotor

■ Main features:

- Total area 460.000 sqm
- Intermodal Terminal 160.000 sqm
- 6 tracks of 750 m
- 2 warehouse of 12.000 sqm each rail connected
- Open warehouse of 17.000 sqm with cranes of 12,50 and 30 tons
- Dangerous area for technical transit
- Parking area: 18.000 sqm
- Parking area under construction: 40.000 sqm
- Road weighing
- Offices.: 2.500 sqm



FRANCESCO PARISI GROUP

Forwarding and logistic since 1807
www.francescoparisi.com

Thank you for your kind attention

Ruggiero Daloiso
Sales & Marketing
Project Development

ruggiero.daloiso@francescoparisi.com