

# Logistics Web Portal

Tomas Salamon  
Sales



IBS – Congress Trieste 2019 | 17-18<sup>th</sup> October 2019

---

# Agenda

## Building Single European Railway Market → Interoperability

- OLTIS Group Profile
- Logistics Web Portal - TAF-TSI Ready
  - Tracking and Tracing Module
  - Railway Wagon Keepers (Rolling Stock Register)
  - Railway Undertakings (ERP Module)
  - Forwarders (Forwarding Module)
  - Railway Operators Module (conventional / intermodal)
  - Industrial Plant/Factory Logistics Module
- References – Successful Implementations

[www.oltisgroup.com](http://www.oltisgroup.com)

# OLTIS Group | Profile

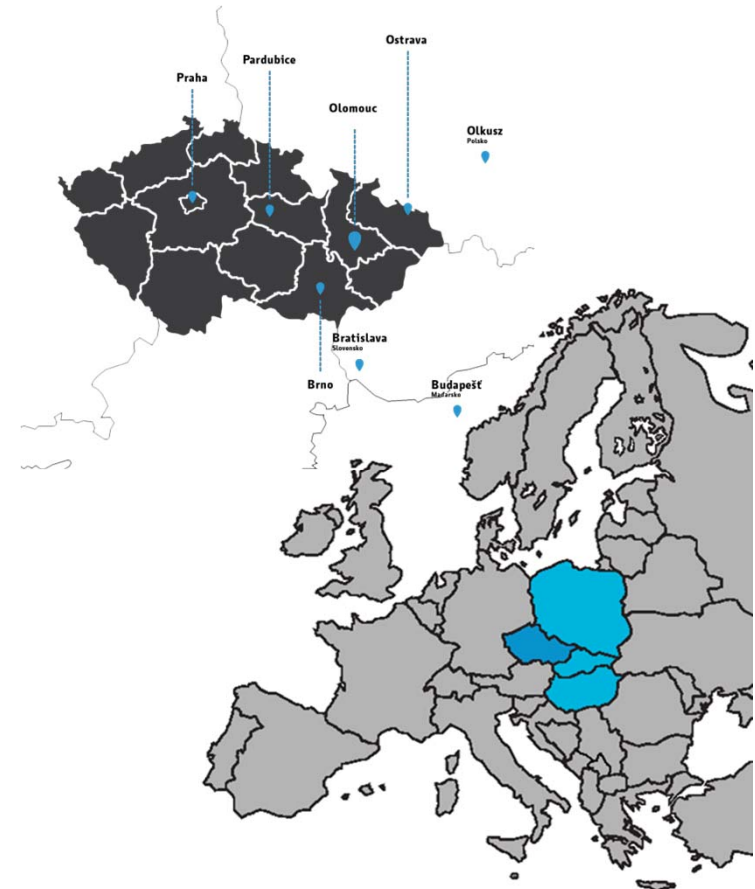
- Information systems for transport and logistics
- Czech private group of specialized software companies since 1993
- Total of 250 employees (80% development)
- ISO certified,  
Microsoft and Oracle Gold partner
- State-of-the-art Datacentre
- Customers (24/300/11.000)
- IT Activities: Products (9 areas)



- **Membership:** UNIFE (TAF-TSI Working Groups), OSJD, CCTT, IBS; UIC, CIT, OTIF
- **Projects:** Eureka, FP7, Horizon 2020, Shift2Rail, CEF

# OLTIS Group | Members

oltis group



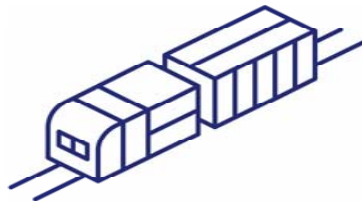
Subsidiaries in Slovakia, Poland and Hungary

# Areas of IT Activities

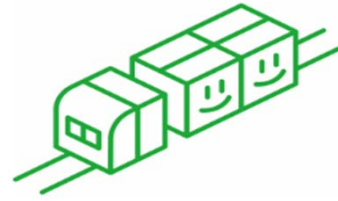
## Information Systems for Transport and Logistics



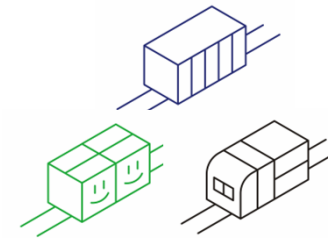
Infrastructure  
Manager



Freight Railway  
Undertaking  
([large](#); [s/m](#))



Passenger Railway  
Undertaking



Rail Vehicle  
Register



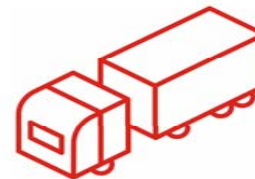
Factory Transport



Container  
Terminals



Logistics and  
Production  
Warehouses



Road Freight  
Hauliers



Rail and Road  
Forwarding



Mobile  
Technologies

Innovative Software Solutions. TAF/TAP TSI compliant or ready

Bringing a System Into Your Logistics



# Logistics Web Portal - TAF-TSI Ready

oltis group

## Logistics Web Platform:

- Strategic unifying platform for the upgraded and new IT products of OLTIS Group
- Platform includes and is being enhanced of:

Segment (Product)
<b>Tracking and Tracing Module</b>
<b>Railway Wagon Keepers (Rolling Stock Register)</b>
<b>Railway Undertakings (ERP Module)</b>
<b>Forwarders (Forwarding Module)</b>
<b>Railway Operators Module (conventional / intermodal)</b>
<b>Industrial Plant/Factory Logistics Module</b>



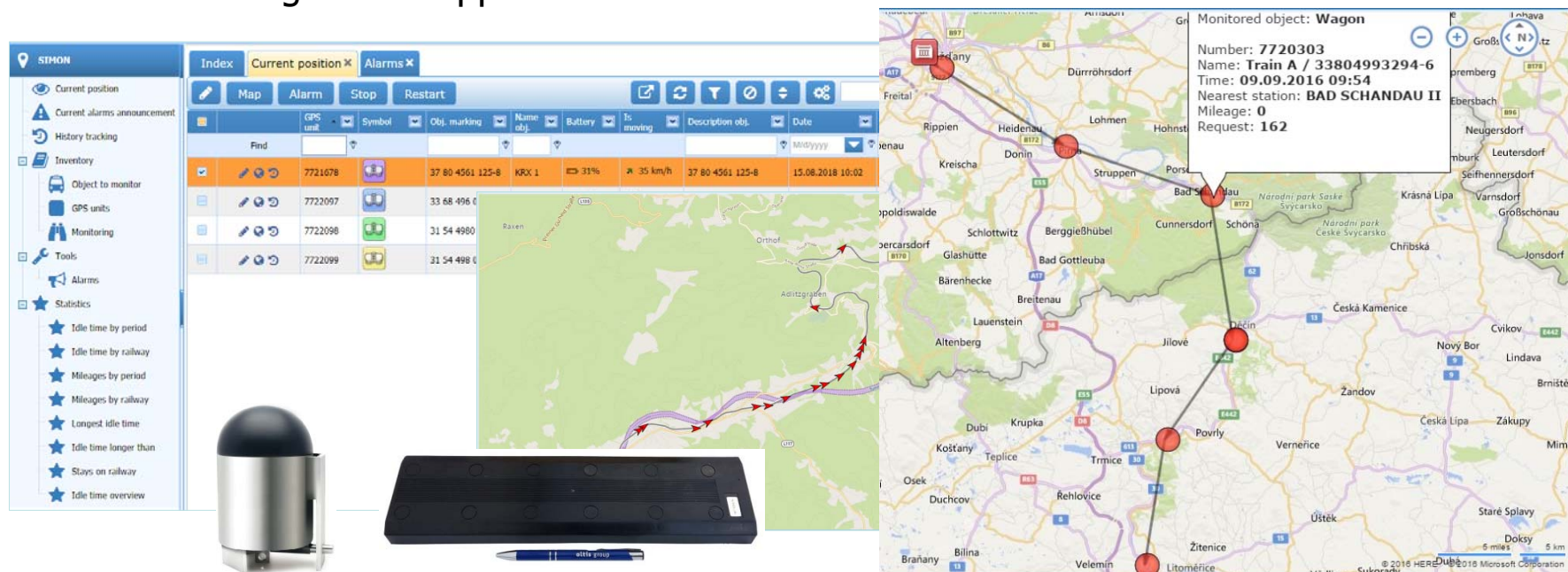
# Track & Tracing Module

oltis group



## Tracking and Tracing (SIMON - System of Intelligent Monitoring)

- GPS/GSM Unit → Gate (ANDY) → Web Application
- Standard monitoring functionalities (geozones, alarms, etc.)
- Specialized railway functionalities (ERNG → precise wagon run/mileage calculation)
- Asset Management support



Bringing a System Into Your Logistics

# Rolling Stock Register for WK

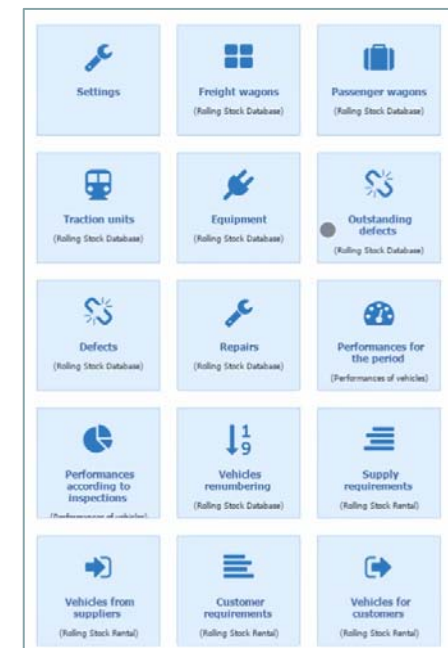
**Rolling Stock Register** for freight /passenger cars, locomotives and equipment

- **Technical data** of the vehicle and the detachable equipment
- Regular **maintenance** checks planning; maintenance alerts
- **Defects** (GCU/AVV classifications) registration, **repairs** planning
- Rental and lease **contracts**
- **Accounting/controlling data** pre-processing
- **Mobile application** for tablets/smartphones
- Ready for integration with **positioning**, **mileage** calculation



**TAF TSI**

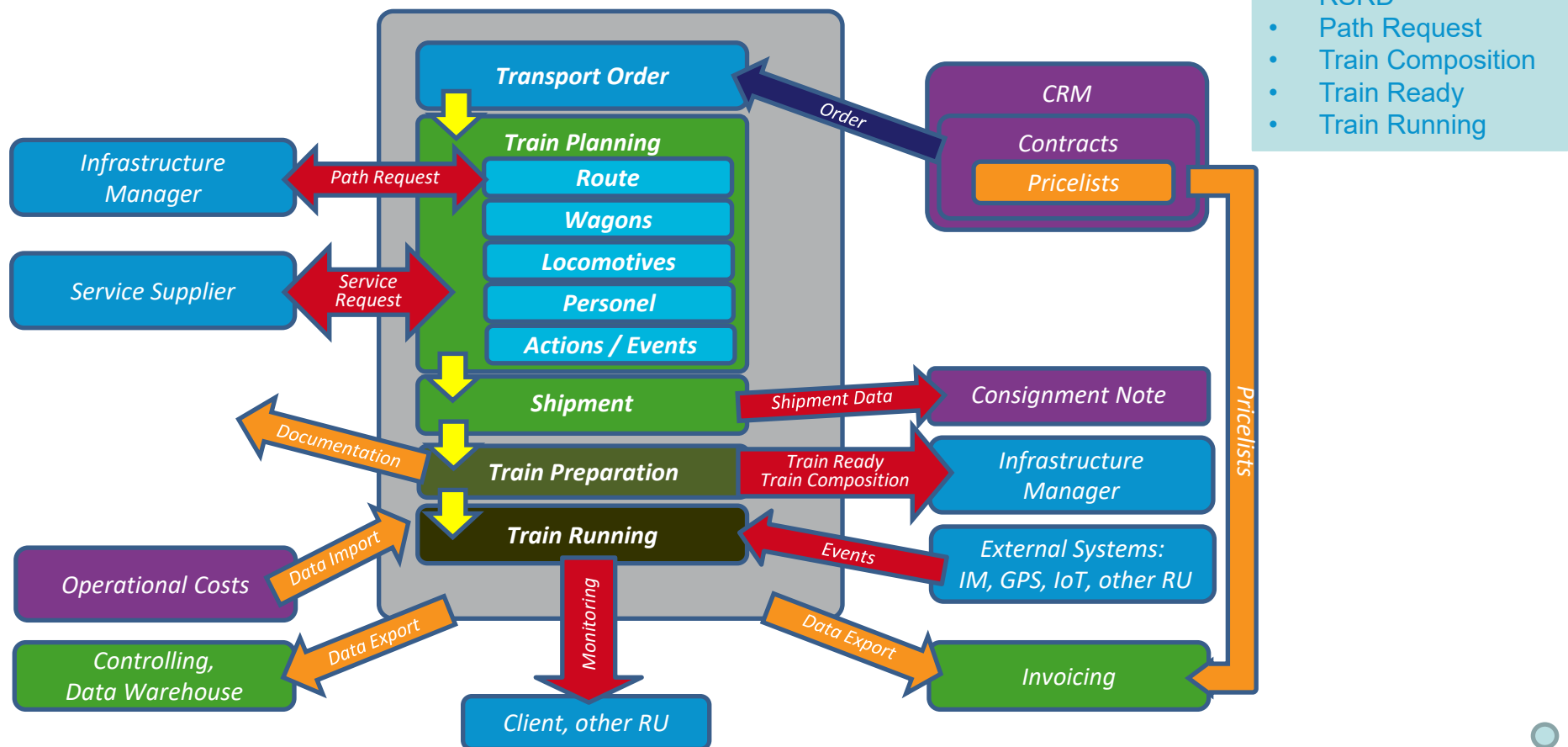
- RSRD ready





# ERP module for <sub>s/m</sub>FRU

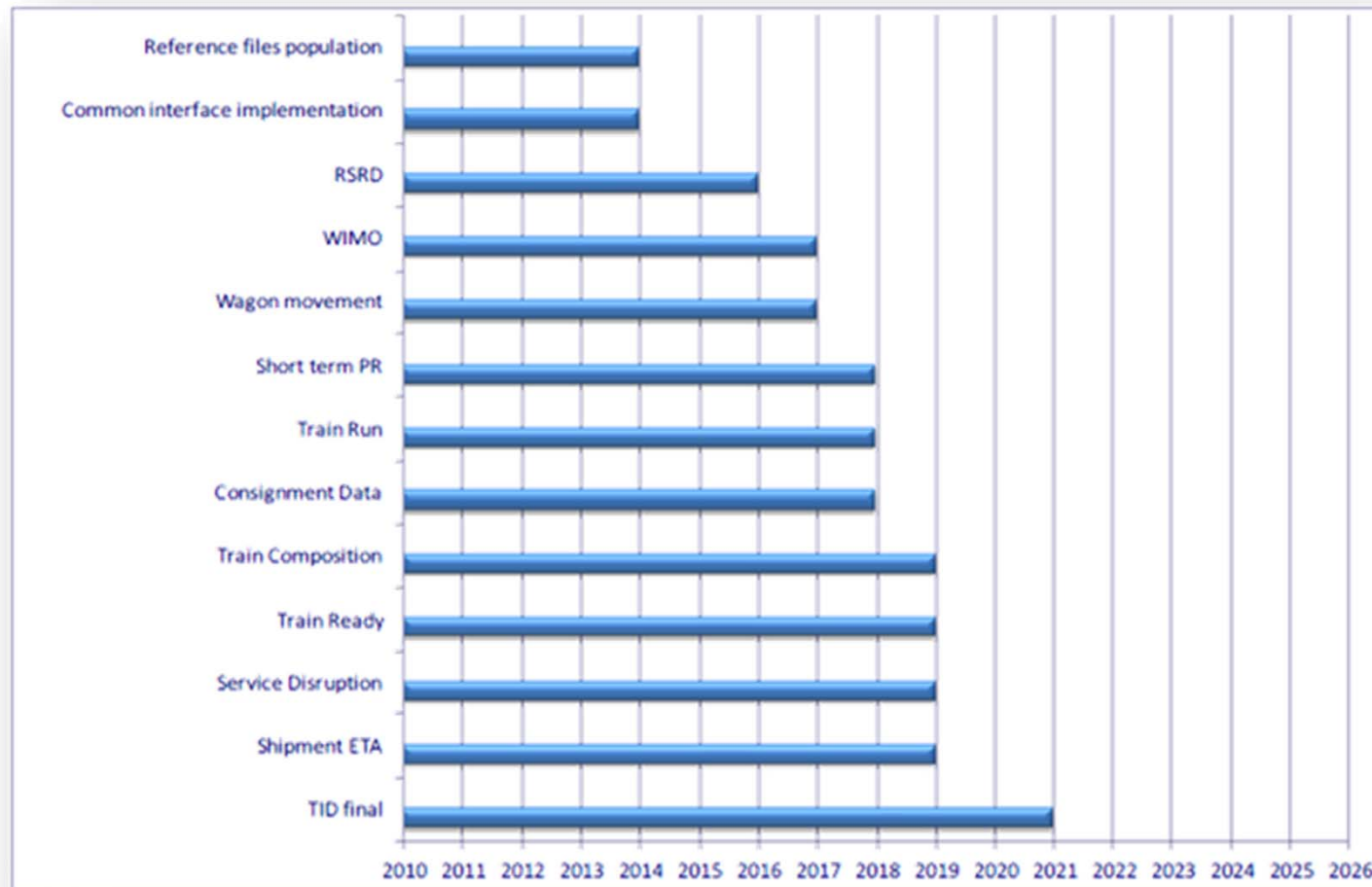
## Planning – Operations – Evaluation



### TAF TSI

- RSRD
- Path Request
- Train Composition
- Train Ready
- Train Running

## TAF-TSI Deadlines (LWP Modules and Interfaces)



Data Exchange:  
a. by CI (hard)  
b. individually (soft)

# Rolling Stock Register to RSRD

Technical data made accessible for Common Interface Local Instance in TSIfORMAT

Index Active trains X TSI messages X Freight wagons X

Find X

Status of the revision	Number	Series	Property
Expired	00 00 0000 000-0	Tadds	External
Expired	10 10 1010 101-8	Ea	External
Expired	11 11 1111 111-3	E	Own
Expired	11 12 1555 212-1		
Expired	12 12 1212 121-8	Habillss	External
Not filled	12 31 1154 212-2		External
Not filled	12 31 1154 212-2		External
Expired	13 13 1313 131-3	Ea	Own
Expired	14 14 1414 141-8	Gos	
Not filled	23 56 4425 005-4		
Expired	28 28 2828 282-6	Ea	External
Expired	29 29 2929 292-1	Hfirs	External
Expired	30 30 3030 303-4	E	External
OK	31 31 3131 313-9	Klm	External
Not filled	31 53 3555 004-4	Rgs	
Not filled	31 53 3555 095-2	Rgs	
Not filled	31 53 3555 199-2	Rgs	

Page 1 of 4 (68 items) | 1 | 2 | 3 | 4 |

### Detail of the freight wagon [Id: 7]

Number: 31 31 3131 313-9 Series: Klm Length (m): 15 Carrying capacity (kg): 35,000  
 Property: External Kind: Tank railcar Weight (kg): 25,000 Number of axles: 2

Basic data Reg. data Certificate Dimensions Parameters Running gear Equipment Business Attachments Carrying capacity Repairs Price

#### CLASSIFICATION

Operating group: Restricted operation  
 Inventory code: 55-555  
 Production code: 789789  
 Territorial restrictions: National  
 Country: Albania  
 Manufacturing year: 1999  
 Display: ☒

#### INSPECTION

Type	Latest	Cycle	Period	Next	Tolerance
Internal revision	6/26/2017	4	Year	6/26/2021	
Wagon revision	7/7/2016	6	Year	7/7/2022	2
Revision repair ...		4	Year		

#### NOTE

pozn

#### OWNERSHIP RELATIONS

Relationship	Company
TEST	OLTIS Group a.s.
Owner	RegioJet
Producer	KOTOUČ ŠTRAMBERK, spol. s r. o.
Holder	Test 2

Storno

# WIMO (Wagon and Intermodal Unit Operation - database)

Rolling stock and equipment movements and events

Index

Current routing

Q

New event

	Vehicle number	Series	Event name	Event time	Station of event	Station of event - code	Event code	Forwarding station	Forwarding station - code	Station of destination	
Find			X								
<div></div>	<div>Q</div>	88 88 88-88 888-8	Bcmh	Wagon Yard Arrival message	9/18/2018 8:16 AM	ACIUTA	53-358598	W5015	ACAS	53-444083	AGHIRES
<div></div>	<div>Q</div>	55 55 5555 555-9	121	Wagon Yard Arrival message	7/31/2017 3:48 PM	OLOMOUC HLAVNÍ NÁDRAŽÍ	54-343624	W5015	ACAS	53-444083	ACIUTA
<div></div>	<div>Q</div>	28 28 2828 282-6	Ea	Wagon Yard Departure message	8/1/2017 8:57 AM	OLOMOUC HLAVNÍ NÁDRAŽÍ	54-343624	W5016	4.TK	54-334730	Adršpach
<div></div>	<div>Q</div>	29 29 2929 292-1	Hfirs	Wagon Arrival Notice message	11/6/2017 1:51 PM	AIUD	53-316950	W5002			
<div></div>	<div>Q</div>	30 30 3030 303-4	E	Wagon Interchange Notice messag...	9/5/2017 9:30 AM	Szob	55-105049	W5009	BUCURESTI B...	53-800367	OLOMOUC HL...
<div></div>	<div>Q</div>	31 31 3131 313-9	Klm	Wagon Arrival Notice message	11/6/2017 1:51 PM	AIUD	53-316950	W5002			
<div></div>	<div>Q</div>	32 32 3232 323-4	Klm	Wagon Arrival Notice message	11/6/2017 1:51 PM	AIUD	53-316950	W5002			
<div></div>	<div>Q</div>	51 51 51-51 535-7	Bvcmbz ...	Wagon Interchange Notice messag...	9/5/2017 9:30 AM	Szob	55-105049	W5009	BUCURESTI B...	53-800367	OLOMOUC HL...
<div></div>	<div>Q</div>	34 34 3434 343-4		Undetermined event	7/31/2017 3:48 PM	OLOMOUC HLAVNÍ NÁDRAŽÍ	54-343624	L0000			
<div></div>	<div>Q</div>	44 44 4444 444-2		Wagon Refused At Interchange me...	6/26/2018 9:17 AM	ADJUD	53-508119	W5013			
<div></div>	<div>Q</div>	10 10 1010 101-8	Ea	Undetermined event	8/16/2017 2:55 PM	Alba Iulia	53-230383	L0000	ACIUTA	53-358598	ACAS
<div></div>	<div>Q</div>	11 11 1111 111-3	E	Wagon Yard Departure message	8/16/2017 2:55 PM	Alba Iulia	53-230383	W5016	ACIUTA	53-358598	ACAS
<div></div>	<div>Q</div>	33 33 3333 333-9	Kbs	Wagon Interchange Notice messag...	8/1/2017 9:09 AM	ABRAMI	53-446781	W5009	ACAS	53-444083	ACIUTA
<div></div>	<div>Q</div>	22 22 2222 222-6		Undetermined event	7/31/2017 3:48 PM	OLOMOUC HLAVNÍ NÁDRAŽÍ	54-343624	L0000			
<div></div>	<div>Q</div>	66 66 6666 666-2	Fals	Wagon Interchange Notice messag...	8/1/2017 9:09 AM	ABRAMI	53-446781	W5009	ACAS	53-444083	ACIUTA
<div></div>	<div>Q</div>	13 13 1313 131-3	Fa	Wagon Departure Notice message	7/31/2017 3:48 PM	OLOMOUC HLAVNÍ NÁDRAŽÍ	54-343624	W5004	OLOMOUC HI	54-343624	IFVITCF

Page 1 of 5 (84 items)

1

2

3

4

5

Page size: 20

# Path Request Interface

Placing PR to IM for set up train and receiving confirmation

TR/3024/-----3520/22/2019

2019

December | 2018

31

1

2

3

4

5

6

7

8

9

10

11

12

13

14

15

January | 2019

28

29

30

31

1

2

3

4

5

6

7

8

9

10

11

12

13

14

15

16

February | 2019

25

26

27

28

1

2

3

4

5

6

7

8

9

10

11

12

13

14

15

16

March | 2019

1

2

3

4

5

6

7

8

9

10

11

12

13

14

15

16

17

18

19

20

April | 2019

29

30

1

2

3

4

5

6

7

8

9

10

11

12

13

14

15

16

17

18

19

20

May | 2019

27

28

29

30

31

1

2

3

4

5

6

7

8

9

10

11

12

13

14

15

June | 2019

1

2

3

4

5

6

7

8

9

10

11

12

13

14

15

16

17

18

19

20

July | 2019

29

30

31

1

2

3

4

5

6

7

8

9

10

11

12

13

14

15

16

17

August | 2019

26

27

28

29

30

31

1

2

3

4

5

6

7

8

9

10

11

12

13

14

September | 2019

30

1

2

3

4

5

6

7

8

9

10

11

12

13

14

15

16

17

18

19

October | 2019

28

29

30

31

1

2

3

4

5

6

7

8

9

10

11

12

13

14

15

16

November | 2019

25

26

27

28

29

30

1

2

3

4

5

6

7

8

9

10

11

12

13

14

December | 2019

1

2

3

4

5

6

7

8

9

10

11

12

13

14

TRID \*

TR / 3024 /

3520

/

22

Lead RU

3024 - Magyar Magánvasút Zrt. (MMV)

Coordinating IM

Responsible IM

Add at the end

Infrastructure manager

Magyar Államvasutak Zrt. (0055)

List of paths

TRID	Origin station	Destination station	Status	Action
TR/3024/-----3520/22/2019	Debrecen	Budapest-Keleti		
TR/3024/-----1206/00/2019	Debrecen	Budapest-Keleti		
TR/3024/-----2154/22/2019	Budapest-Keleti	Ács		

Showing 1 to 3 of 3

9 items available

<<

<

1

>

>>

25

Without selected calendar

☒

First day of path request

Ends after

27.09.2019

Coordinating IM

Status

PRID

Valid now

☒

Valid in future

☒

Last day of path request

Lead RU

PAID

Infrastructure manager

Station on path

Apply filters

Remove filters



# Train Composition

$$\text{RU} \rightarrow \text{IM}, \text{RU} \rightarrow \text{RU}$$

Index

Active trains

TSI messages

🔍

📄

🔄

🔼

🔽

⚙️

📄

📁

🗑️

Train ready

Train composition

	Train number	State	Date journey	From	To	Carrier	TRID	Taking
Find			M/d/yyyy					
	11111	Active	10/23/2019	BEROUN, SDC PRAHA	OLOMOUC HLAVNI N., AUTO CEECHAK	Chinese Railw...		

Train [Id: 38311]

Train number: 11111

From: 54

651240 - BEROUN, SDC PRAHA

Departure time: M/d/yyyy

h:mm t

Main carrier: Chinese Railways

Date journey: 10/23/2019

To: 54

221150 - OLOMOUC HLAVNI N., AI

Arrival time: M/d/yyyy

h:mm t

Train type: Cargo train

Train

Route

Events

List of vehicles

Attachments

Identification data

Requests

Prices

REGISTRATION INFORMATION

GENERAL DATA

TRID:

Code:

Number of wagons:

Train composition:

Traction units:

Personnel:

Contact:

Carriers:

Tasks on the route:

Transmitting carrier:

Takeover station: 53

Time of transfer: M/d/yyyy

Receiving carrier:

Station from:

54

X

730747 - BEROUN

X

Station to:

54

X

380154 - Brno dolní nádraží

X

Message status:

Nová

X

Uic recipient:

0054 - Správa železniční dopravní cesty, s.o.

X

OK

Cancel



# Train Ready

RU → IM

Index Active trains ✕ TSI messages ✕

Train ready  
Train composition

	Find	Train number	State	Date journey	From	To	Carrier	TRID	Taking
		11111	Active	10/23/2019	BEROUN, SDC PRAHA	OLOMOUC HLAVNI N., AUTO CECHAK	Chinese Railw...		
		123456789	Active	10/4/2019	ANIES	ANINA			
		123	Planned	10/4/2019	ABRAMI	AGHIRES			
		456321	Planned	10/9/2019	ABALIGET	ABAÚJSZÁNTÓ	Zákazník OG HU		

Page 1 of 1 (4 items) | 1 |

**Train number 11111 [ID: 38311]**

Station on the route: 54 X 730747 - BEROUN X

Ready for departure: 10/15/2019 8:52 PM Message status: Nová X

OK Cancel

# Train Run

Current position, action – planned/being performed

Index

Active trains

🔍

📄

↺

🔍

🔍

🔍

🔍

🔍

🔍

🔍

🔍

🔍

🔍

🔍

🔍

🔍

🔍

🔍

🔍

🔍

🔍

🔍

🔍

🔍

🔍

🔍

🔍

🔍

🔍

🔍

🔍

🔍

🔍

🔍

🔍

🔍

🔍

🔍

🔍

🔍

🔍

🔍

🔍

🔍

🔍

🔍

🔍

🔍

🔍

🔍

🔍

🔍

🔍

🔍

🔍

🔍

🔍

🔍

🔍

🔍

🔍

🔍

🔍

🔍

🔍

🔍

🔍

🔍

🔍

🔍

🔍

🔍

🔍

🔍

🔍

🔍

🔍

🔍

🔍

🔍

🔍

🔍

🔍

🔍

🔍

🔍

🔍

🔍

🔍

🔍

🔍

🔍

🔍

🔍

🔍

🔍

🔍

🔍

🔍

🔍

🔍

🔍

🔍

🔍

🔍

🔍

🔍

🔍

🔍

🔍

🔍

🔍

🔍

🔍

🔍

🔍

🔍

🔍

🔍

🔍

🔍

🔍

🔍

🔍

🔍

🔍

🔍

🔍

🔍

🔍

🔍

🔍

🔍

🔍

🔍

🔍

🔍

🔍

🔍

🔍

🔍

🔍

🔍

🔍

🔍

🔍

🔍

🔍

🔍

🔍

🔍

🔍

🔍

🔍

🔍

🔍

🔍

🔍

🔍

🔍

🔍

🔍

🔍

🔍

🔍

🔍

🔍

🔍

🔍

🔍

🔍

🔍

🔍

🔍

🔍

🔍

🔍

🔍

🔍

🔍

🔍

🔍

🔍

🔍

🔍

🔍

🔍

🔍

🔍

🔍

🔍

🔍

🔍

🔍

🔍

🔍

🔍

🔍

🔍

🔍

🔍

🔍

🔍

🔍

🔍

🔍

🔍

🔍

🔍

🔍

🔍

🔍

🔍

🔍

🔍

🔍

🔍

🔍

🔍

🔍

🔍

🔍

🔍

🔍

🔍

🔍

🔍

🔍

🔍

🔍

🔍

🔍

🔍

🔍

🔍

🔍

🔍

🔍

🔍

🔍

🔍

🔍

🔍

🔍

🔍

🔍

🔍

🔍

🔍

🔍

🔍

🔍

🔍

🔍

🔍

🔍

🔍

🔍

🔍

🔍

🔍

🔍

🔍

🔍

🔍

🔍

🔍

🔍

🔍

🔍

🔍

🔍

🔍

🔍

🔍

🔍

🔍

🔍

🔍

🔍

🔍

🔍

🔍

🔍

🔍

🔍

🔍

🔍

🔍

🔍

🔍

🔍

🔍

🔍

🔍

🔍

🔍

🔍

🔍

🔍

🔍

🔍

🔍

🔍

🔍

🔍

🔍

🔍

🔍

🔍

🔍

🔍

🔍

🔍

🔍

🔍

🔍

🔍

🔍

🔍

🔍

🔍

🔍

🔍

🔍

🔍

🔍

🔍

🔍

🔍

🔍

🔍

🔍

🔍

🔍

🔍

🔍

🔍

🔍

🔍

🔍

🔍

🔍

🔍

🔍

🔍

🔍

🔍

🔍

🔍

🔍

🔍

🔍

🔍

🔍

🔍

🔍

🔍

🔍

🔍

🔍

🔍

🔍

🔍

🔍

🔍

🔍

🔍

🔍

🔍

🔍

🔍

🔍

🔍

🔍

🔍

🔍

🔍

🔍

🔍

🔍

🔍

🔍

🔍

🔍

🔍

🔍

🔍

🔍

🔍

🔍

🔍

🔍

🔍

🔍

🔍

🔍

🔍

🔍

🔍

🔍

🔍

🔍

🔍

🔍

🔍

🔍

🔍

🔍

🔍

🔍

🔍

🔍

🔍

🔍

🔍

🔍

🔍

🔍

🔍

🔍

🔍

🔍

🔍

🔍

🔍

🔍

🔍

🔍

🔍

🔍

🔍

🔍

🔍

🔍

🔍

🔍

🔍

🔍

🔍

🔍

🔍

🔍

🔍

🔍

🔍

🔍

🔍

🔍

🔍

🔍

🔍

🔍

🔍

🔍

🔍

🔍

🔍

🔍

🔍

🔍

🔍

🔍

🔍

🔍

🔍

🔍

🔍

🔍

🔍

🔍

🔍

🔍

🔍

🔍

🔍

🔍

🔍

🔍

🔍

🔍

🔍

🔍

🔍

🔍

🔍

🔍

🔍

🔍

🔍

🔍

🔍

🔍

🔍

🔍

🔍

🔍

🔍

🔍

🔍

🔍

🔍

🔍

🔍

🔍

🔍

🔍

🔍

🔍

🔍

🔍

🔍

🔍

🔍

🔍

🔍

🔍

🔍

🔍

🔍

🔍

🔍

🔍

🔍

🔍

🔍

🔍

🔍

🔍

🔍

🔍

🔍

🔍

🔍

🔍

🔍

🔍

🔍

🔍

🔍

🔍

🔍

🔍

🔍

🔍

🔍

🔍

🔍

🔍

🔍

🔍

🔍

🔍

🔍

🔍

🔍

🔍

🔍

🔍

🔍

🔍

🔍

🔍

🔍

🔍

🔍

🔍

🔍

🔍

🔍

🔍

🔍

🔍

🔍

🔍

🔍

🔍

🔍

🔍

🔍

🔍

🔍

🔍

🔍

🔍

🔍

🔍

🔍

🔍

🔍

🔍

🔍

🔍

🔍

🔍

🔍

🔍

🔍

🔍

🔍

🔍

🔍

🔍

🔍

🔍

🔍

🔍

🔍

🔍

🔍

🔍

🔍

🔍

🔍

🔍

🔍

🔍

🔍

🔍

🔍

🔍

🔍

🔍

🔍

🔍

🔍

🔍

🔍

🔍

🔍

🔍

🔍

🔍

🔍

🔍

🔍

🔍

🔍

🔍

🔍

🔍

🔍

🔍

🔍

🔍

🔍

🔍

🔍

🔍

🔍

🔍

🔍

🔍

🔍

🔍

🔍

🔍

🔍

🔍

🔍

🔍

🔍

🔍

🔍

🔍

🔍

🔍

🔍

🔍

🔍

🔍

🔍

🔍

🔍

🔍

🔍

🔍

🔍

🔍

🔍

🔍

🔍

🔍

🔍

🔍

🔍

🔍

🔍

🔍

🔍

🔍

🔍

🔍

🔍

🔍

🔍

🔍

🔍

🔍

🔍

🔍

🔍

🔍

🔍

🔍

🔍

🔍

🔍

🔍

🔍

🔍

🔍

🔍

🔍

🔍

🔍

🔍

🔍

🔍

🔍

🔍

🔍

🔍

🔍

🔍

🔍

🔍

🔍

🔍

🔍

🔍

🔍

🔍

🔍

🔍

🔍

🔍

🔍

🔍

🔍

🔍

🔍

🔍

🔍

🔍

🔍

🔍

🔍

🔍

🔍

🔍

🔍

🔍

🔍

🔍

🔍

🔍

🔍

🔍

🔍

🔍

🔍

🔍

🔍

🔍

🔍

🔍

🔍

🔍

🔍

🔍

🔍

🔍

🔍

🔍

🔍

🔍

🔍

🔍

🔍

🔍

🔍

🔍

🔍

🔍

🔍

🔍

🔍

🔍

🔍

🔍

🔍

🔍

🔍

🔍

🔍

🔍

🔍

🔍

🔍

🔍

🔍

🔍

🔍

🔍

🔍

🔍

🔍

🔍

🔍

🔍

🔍

🔍

🔍

🔍

🔍

🔍

🔍

🔍

🔍

🔍

🔍

🔍

🔍

🔍

🔍

🔍

🔍

🔍

🔍

🔍

🔍

🔍

🔍

🔍

🔍

🔍

🔍

🔍

🔍

🔍

🔍

🔍

🔍

🔍

🔍

🔍

🔍

🔍

🔍

🔍

🔍

🔍

🔍

🔍

🔍

🔍

🔍

🔍

🔍

🔍

🔍

🔍

🔍

🔍

🔍

🔍

🔍

🔍

🔍

🔍

🔍

🔍

🔍

🔍

🔍

🔍

🔍

🔍

🔍

🔍

🔍

🔍

🔍

🔍

🔍

🔍

🔍

🔍

🔍

🔍

🔍

🔍

🔍

🔍

🔍

🔍

🔍

🔍

🔍

🔍

🔍

🔍

🔍

🔍

🔍

🔍

🔍

🔍

🔍

🔍

🔍

🔍

🔍

🔍

🔍

🔍

🔍

🔍

🔍

🔍

🔍

🔍

🔍

🔍

🔍

🔍

🔍

🔍

🔍

🔍

🔍

🔍

🔍

🔍

🔍

🔍

🔍

🔍

🔍

🔍

🔍

🔍

🔍

🔍

🔍

🔍

🔍

🔍

🔍

🔍

🔍

🔍

🔍

🔍

🔍

🔍

🔍

🔍

🔍

🔍

🔍

🔍

🔍

🔍

🔍

🔍

🔍

🔍

🔍

🔍

🔍

🔍

🔍

🔍

🔍

🔍

🔍

🔍

🔍

🔍

🔍

🔍

🔍

🔍

🔍

🔍

🔍

🔍

🔍

🔍

🔍

🔍

🔍

🔍

🔍

🔍

🔍

🔍

🔍

🔍

🔍

🔍

🔍

🔍

🔍

🔍

🔍

🔍

🔍

🔍

🔍

🔍

🔍

🔍

🔍

🔍

🔍

🔍

🔍

🔍

🔍

🔍

🔍

🔍

🔍

🔍

🔍

🔍

🔍

🔍

🔍

🔍

🔍

🔍

🔍

🔍

🔍

🔍

🔍

🔍

🔍

🔍

🔍

🔍

🔍

🔍

🔍

🔍

🔍

🔍

🔍

🔍

🔍

🔍

🔍

🔍

🔍

🔍

🔍

🔍

🔍

🔍

🔍

🔍

🔍

🔍

🔍

🔍

🔍

🔍

🔍

🔍

🔍

🔍

🔍

🔍

🔍

🔍

🔍

🔍

🔍

🔍

🔍

🔍

🔍

🔍

🔍

🔍

🔍

🔍

🔍

🔍

🔍

🔍

🔍

🔍

🔍

🔍

🔍

🔍

🔍

🔍

🔍

🔍

🔍

🔍

🔍

🔍

🔍

🔍

🔍

🔍

🔍

🔍

🔍

🔍

🔍

🔍

🔍

🔍

🔍

🔍

🔍

🔍

🔍

🔍

🔍

🔍

🔍

🔍

🔍

🔍

🔍

🔍

🔍

🔍

🔍

🔍

🔍

🔍

🔍

🔍

🔍

🔍

🔍

🔍

🔍

🔍

🔍

🔍

🔍

🔍

🔍

🔍

🔍

🔍

🔍

🔍

🔍

🔍

🔍

🔍

🔍

🔍

🔍

🔍

<

# Railway Operators Module

## RailCop Project

- Developed for:  
**Freight railway operators (conventional / intermodal)**
- Key functionalities:
  - Planning
  - Operations
    - Train inquiries, Transport inquiries; Train Orders; Transport Orders
    - Capacity Management (Booking, Prioritizing, Optimizations, Visualization); Containers
    - Consignments, Consignment notes
    - Monitoring - Tracking and Tracing, Map
  - Costs and Sales, Controlling
    - Pricelists; Costs split/assignment; Costs and sales calculations
    - Controlling; Reports

# OLTIS Group | References

Infrastructure Managers; Railway Undertakings; Railway freight forwarders and operators; Wagon keepers/users; Production plants and cargo shippers; Road carriers and forwarders, Terminals and Warehouse operators; Universities; Associations; Strong position in CZ and SK



Bringing a System Into Your Logistics

# TAF/TAP TSI Implementations <sup>1/2</sup>

Product	RSRD	Path Request		Path Details		Train Composition			Train Ready		Train Running		
		CZ	HU	CZ	HU	CZ	SK	HU	CZ	HU	CZ	SK	HU
EVAL; LWP; IS OLTIS	✓	✓	✓	✓	✓	✓	✓	✓	✓	✓	✓	✓	✓
									✓ implemented	✓ in progress			

# TAF/TAP TSI Implementations <sup>2/2</sup>

Product	Company Reference Files	Location Reference Files	RSRD	Path Request	Train Identifiers	Infrastructure Reference Notice Database	Train Composition	Train Ready	Train Running
KAFR; REVOZ; KADR; DOMIN; CDS; GRAPP; APORT; KAPO; DW; ETD	✓	✓	✓	✓	✓	✓	✓	✓	✓
EMAN; DISK OŘ; KASO; APS	✓	✓		✓	✓	✓	✓	✓	✓
APS	✓	✓		✓	✓		✓	✓	
HEROS				✓			✓		



**Thank you for your attention**  
E) tomas.salamon@oltisgroup.cz | T) +420 588 208 414 | M) +420 724 095 397

**OLTIS Group a.s.**  
**Dr. Milady Horákové 1200/27 | 779 00 Olomouc | Czech Republic**  
**www.oltisgroup.com**