



**WE ARE COMPANY ESTMA , LOCATED IN
LATVIA, RIGA CAPITAL CITY**

OUR TOP DESTINATIONS – KAZAKHSTAN, UZBEKISTAN, MONGOLIA

WORLDWIDE LOGISTIC SOLUTIONS BY RAIL, ROAD, AIR AND MARINE TRANSPORT. SHIP AGENCY SERVICES



OUR NEIGHBORHOOD COUNTRIES



FREIGHTS IN BULK, LIQUID, WAGONS AND CONTAINERS



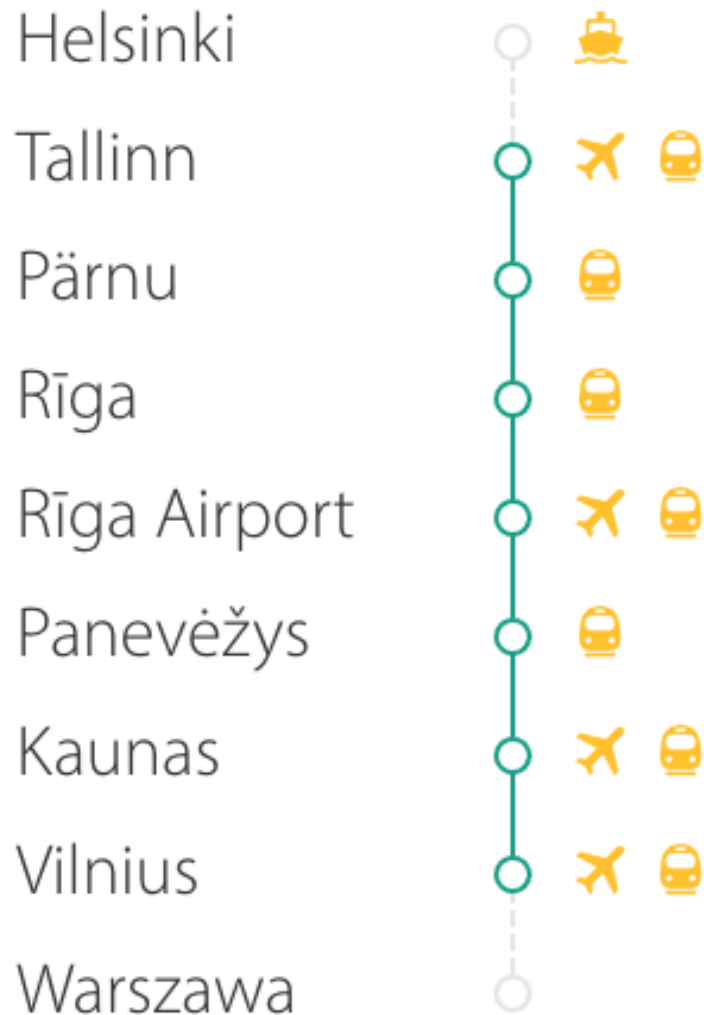
RIGA – MOSCOW – RIGA
LATVIA – BELORUSSIA – UKRAINE AND V.V.
LATVIA – CENTRAL ASIA



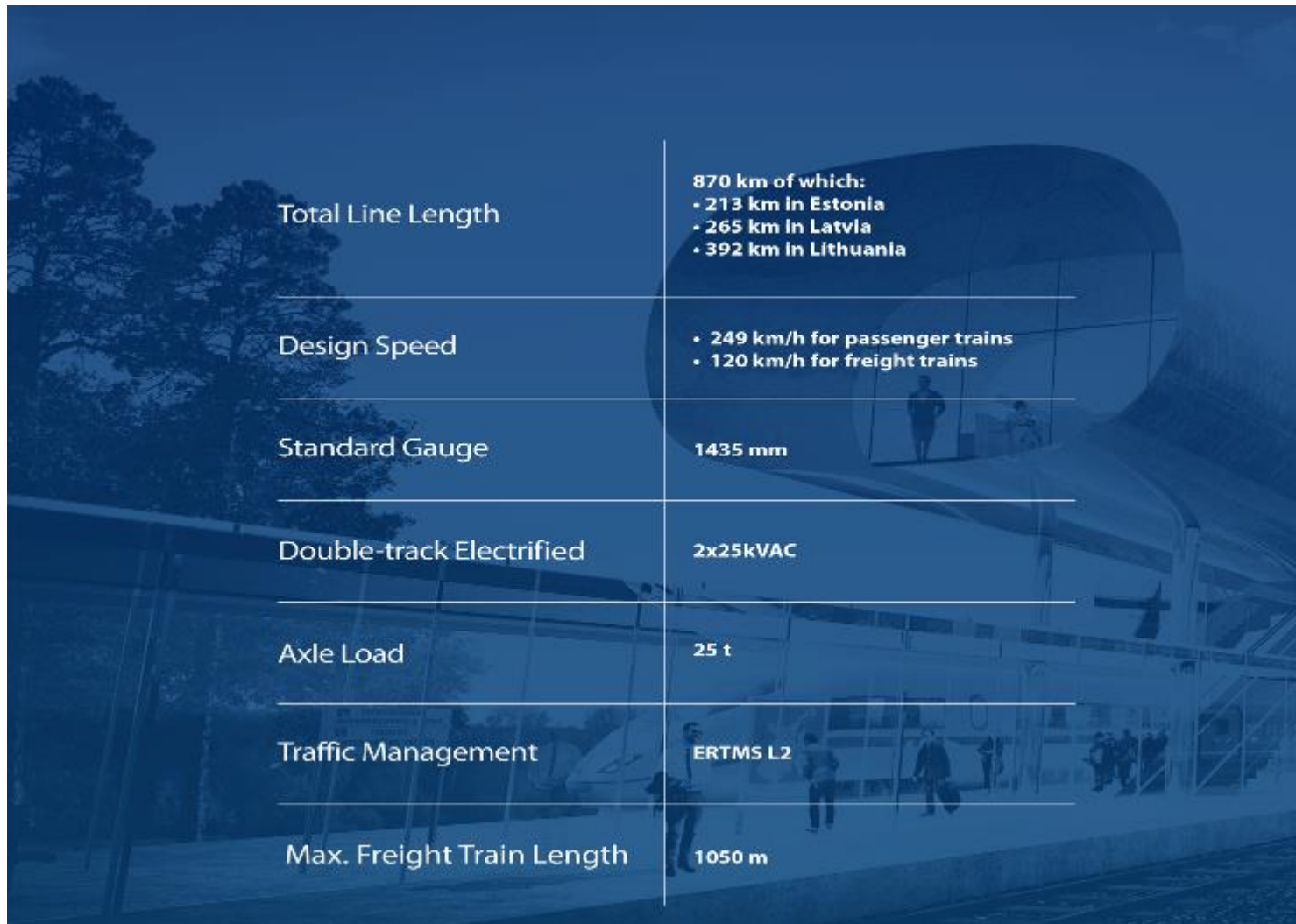
**ONE OF THE LARGEST
INFRASTRUCTURE PROJECTS OVER
LAST 100 YEARS**



EUROPEAN TRANSPORT NETWORK : NORTH SEA – BALTIC CORRIDOR



- **FOR PASSENGERS AND FREIGHTS**
- **LENGTH 870 KM**
- **MAX SPEED 249 KM/H**
- **85 % FINANCED BY THE EUROPEAN UNION**



Total Line Length	870 km of which: <ul style="list-style-type: none">• 213 km In Estonia• 265 km In Latvia• 392 km In Lithuania
Design Speed	<ul style="list-style-type: none">• 249 km/h for passenger trains• 120 km/h for freight trains
Standard Gauge	1435 mm
Double-track Electrified	2x25kVAC
Axle Load	25 t
Traffic Management	ERTMS L2
Max. Freight Train Length	1050 m

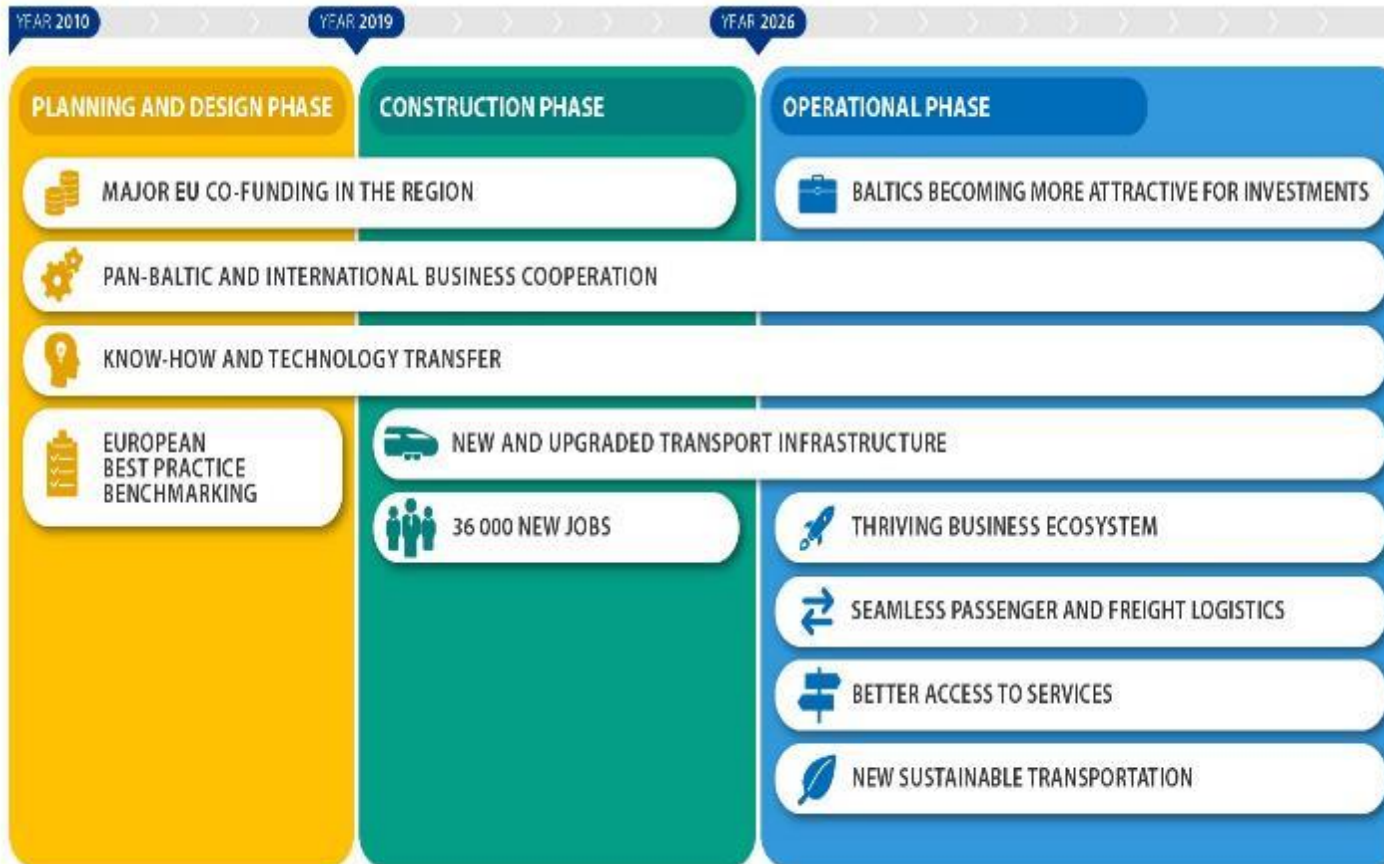
CURRENT CARGO FLOWS BY TRUCKS



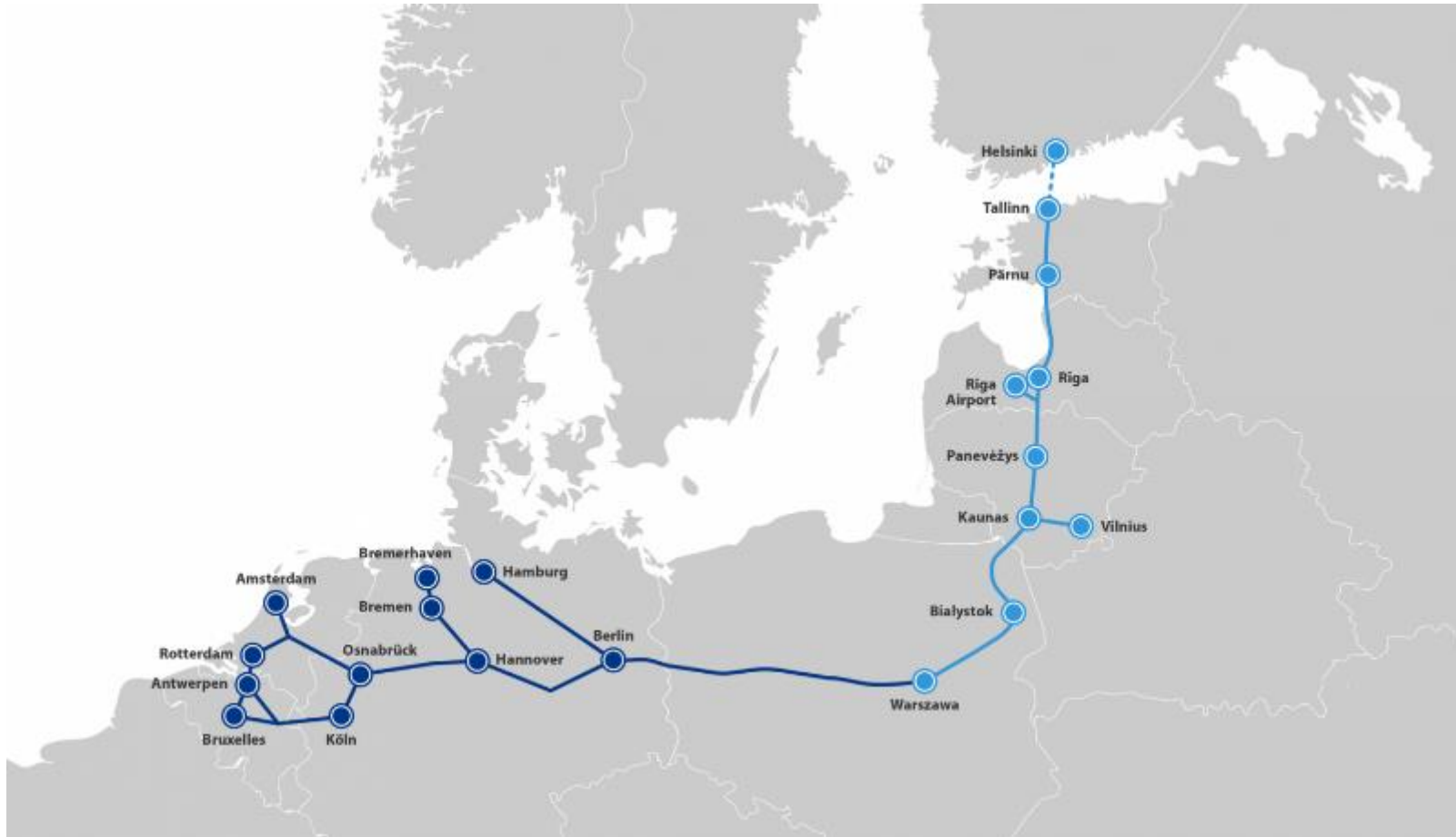
AND SEA SHIPMENTS



RAILWAY IS A PERFECT ALTERNATIVE WITH MINIMUM EMISSIONS



- **ECONOMIC GROWTH IN THE BALTICS**
- **AN ENVIRONMENT FRIENDLY**
- **BALTIC INTEGRATION IN THE EU**



WWW.ESTMA.COM

