

# INNOCENTI DEPOSITI

*MULTIFUNCTIONAL RAIL TERMINALS*



*ADVANCED LOGISTIC SOLUTIONS*

Our activity started in 1948 with the storage and the distribution of Scandinavian forestal products in the Italian market



After 75 years developments, Paper Industry is still an important fields of activity



# OUR HISTORY: INDUSTRIAL PRODUCTS

# OUR HISTORY: CONSUMER PRODUCTS

In 1975 we initiated a new activity based on consumer products

In 1999 the building of our first robotised warehouse, started our investment strategy in automation of warehouse and distribution centers activity

Today we can offer a network of locations specialised in advanced logistic solutions for consumer products





Interconnected solutions with a high technological profile in our offer of *Contract Logistics projects*



Attention to the Environment



Our proposal of *Multimodal Transports*



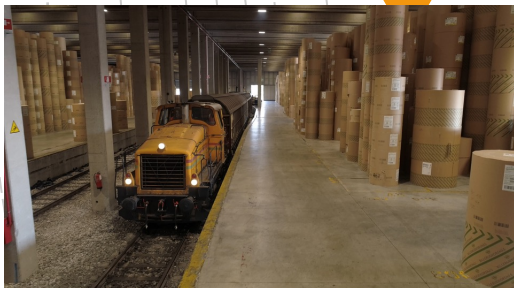
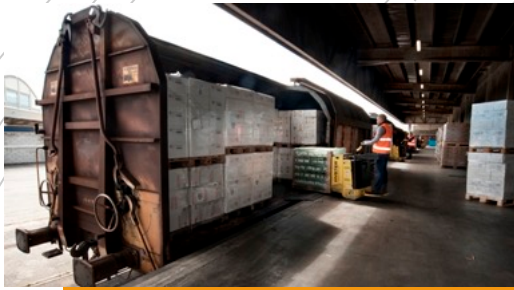
FOCUS OF OUR MISSION:  
PROCESS AUTOMATION  
AND ENVIRONMENT

# CONTRACT LOGISTICS

Thanks to our flexible and proactive team we organise our facilities in order to manage and distribute: raw material, semifinished and consumer products, in Italy and Europe.

Continuos investments in innovative technologies let us offer *interconnected process automations* and propose *information platforms* perfectly in line with customers requirements.



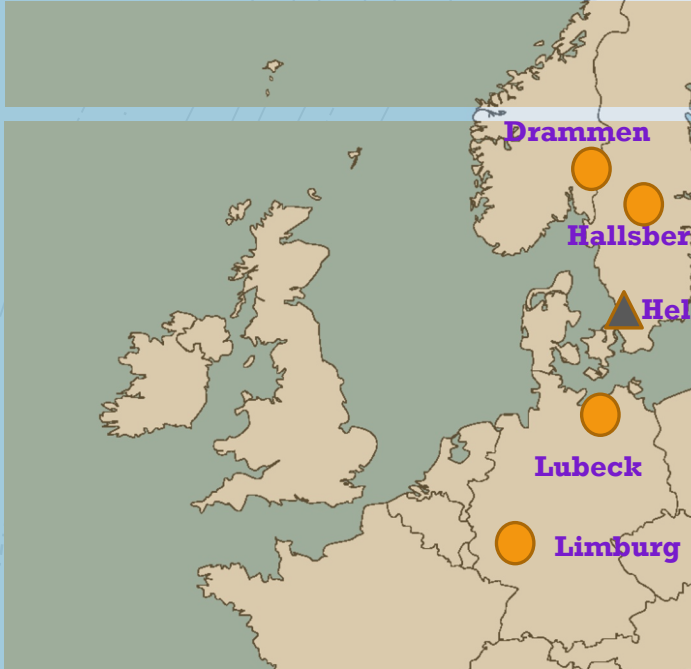


*Rail Linked Logistic Facilities* and partnerships with the main rail operators, enables us to provide multimodal solutions

Road and short sea services integrate *rail transport* in our global distribution offer

# MULTIMODAL TRANSPORTS

# European Network



Helsinki

Drammen

Hallsberg

Helsingborg

Lubeck

Limburg

Milano

Grisignano

Lodi

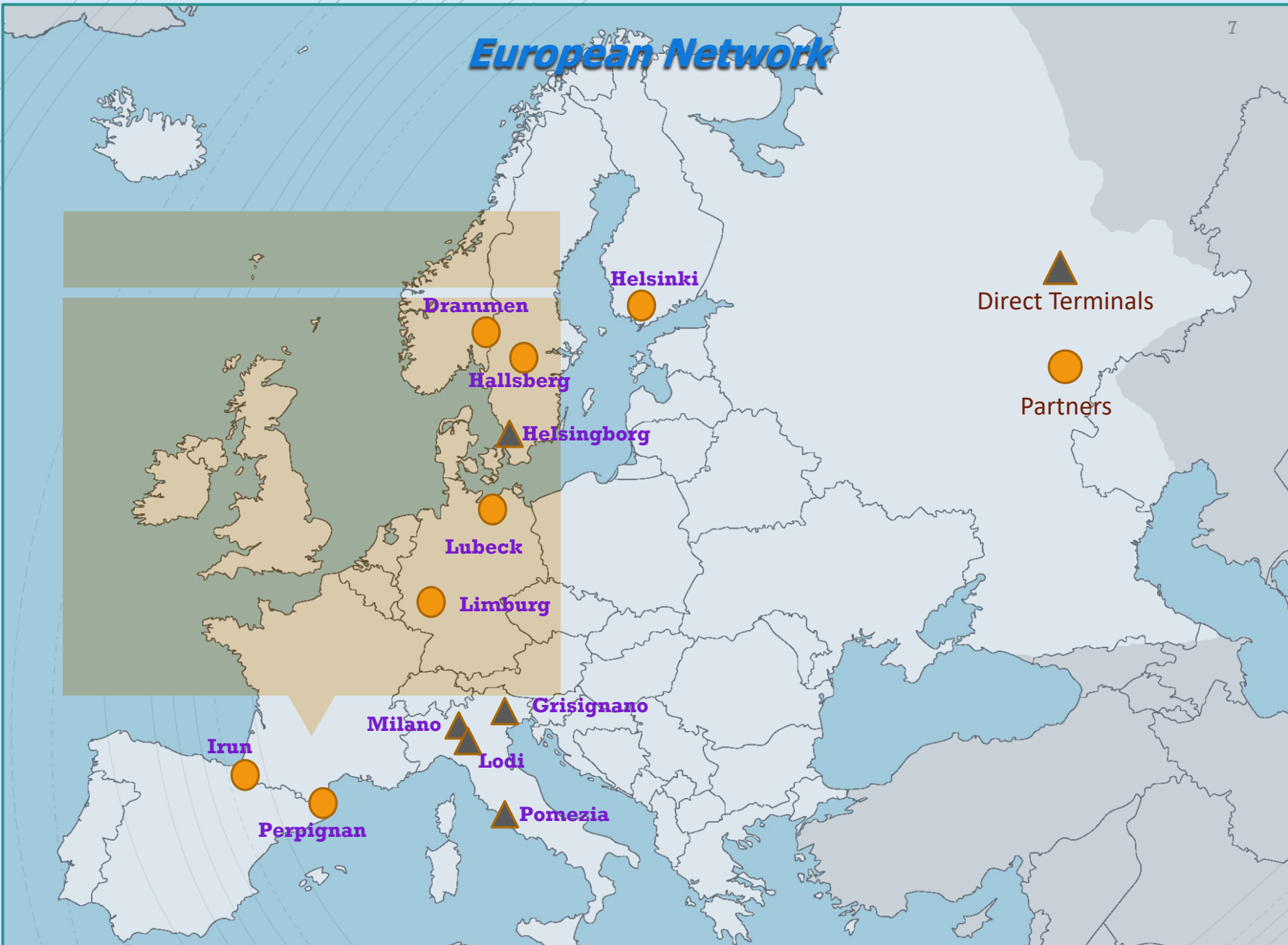
Pomezia

Irun

Perpignan

Direct Terminals

Partners



# Warehouses and Rail Terminals



IT-Lodi



IT-Grisignano (VI)



IT-Limito di Pioltello (MI)



SE-Helsingborg



IT-Pomezia (Roma)



## Grisignano di Zocco

The warehouse is located in the North East of Italy, close to Verona, Vicenza, Padua and Venice.

The location has a total covered space of 15.000 sqm.



### Equipment:

- Forks for any kind of palletised goods
- Clamps for paper reels
- Locomotors for wagon shunting



Main activity is the storage and distribution of forestal products.



Rail  
Terminal  
Current  
Setup

Connected to ***DB Schenker network*** with 5 trains per week; Possibility to reach any European country

# GRISIGNANO RAIL SETUP

Partner of ***Scandifibre Logistic System***, available an already structured solution to reach with FTL or LTL shipments Sweden, Norway and Denmark.

Partner of ***RCA*** (Rail Cargo Austria) with a weekly train from Slovakia.

A few Km from ***Padova Intermodal*** terminal.

# Pomezia

The warehouse is located in Laurentina Road 5 km from the rail terminal of Santa Palomba.

It is a modern and flexible structure suitable for any kind of storage.



## Equipment:

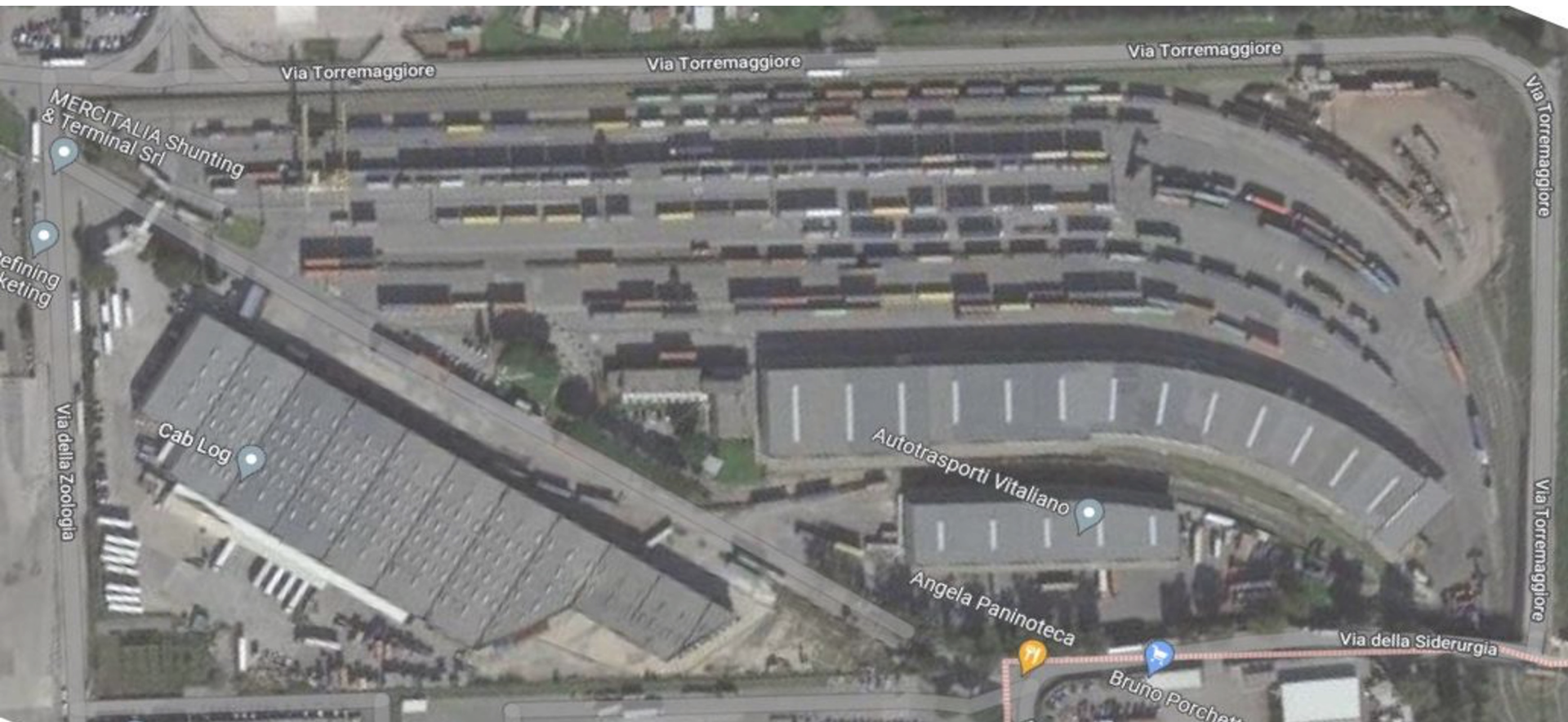
- Forks for any kind of palletised goods
- Clamps for paper reels

*Ramps* for easy loading or unloading of any kind of equipment

## Pomezia Rail Connections

### Our Logistic Facility

- Is located 5km from ***Santa Palomba Intermodal*** terminal.
- Daily intermodal Train connection with Milano Smistamento

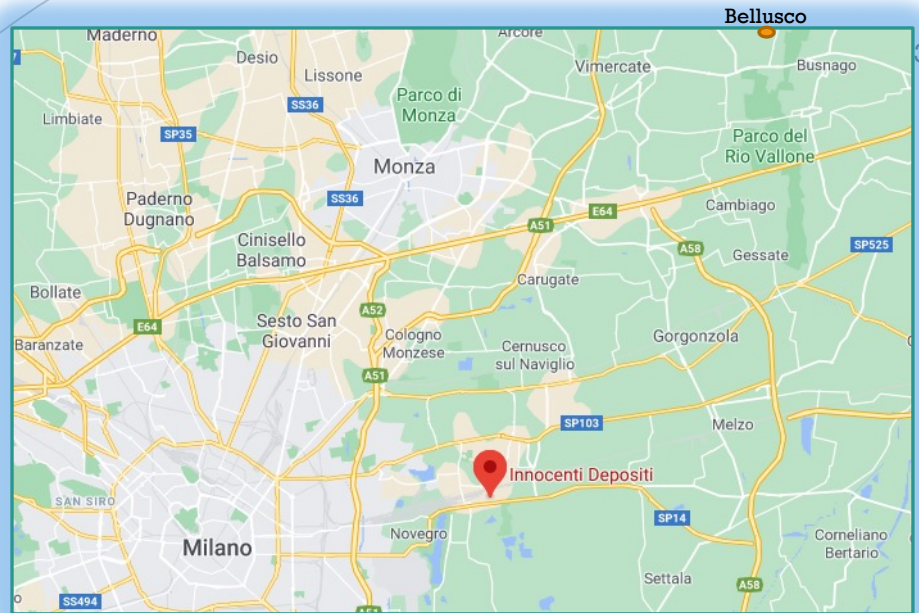


# Milano Smistamento

*The warehouse* is located in Limoto di Pioltello east of Milano

connected to the main motorway system.

The location has 3 buildings for a total covered space of 40.000 sqm.



## Equipments:

- Trucks and Forklift for any kind of palletised goods
- Clamps for paper reels
- Cranes for container and swap bodies
- Locomotors for wagon shunting

## Main activities:

Storage and distribution for forestal products and palletized goods

Light Intermodal Operations

Rail Crossdocking for international Shipments



## Milano Smistamento Rail Setup

- Milano – Multimodal Rail Terminal – Actual Setup:
  - Partner of **Scandifibre Logistic** Network: available an already structured solution to reach with FTL or LTL shipments Sweden, Norway and Denmark
  - Connected to **DB Schenker** network with 5 trains per week: possibility to reach any European country
  - Partner of **Mercitalia Rail** running a conventional Train to Denmark every second week
  - Linked to **RCA** (Rail Cargo Austria) network with a weekly train: possibility to reach Austria and most European countries, particularly Eastern Europe.
- A few Km from **Melzo** and **Segrate Intermodal** terminals.

# Our Main Partners



FACILE STAR BEVE



HIGH PERFORMANCE THERMOPLASTICS



The Biofore Company UPM



STOCKHOLM · SVEZIA



THANKS FOR  
YOUR  
ATTENTION



INNOCENTI DEPOSITI