



TAILWIND

SHIPPING LINES

„Am Ende muss die Ware in der Filiale stehen“



Towards Self-Sufficiency

– Tailwind Shipping Lines (TWS) by LIDL:

1

Secure Market & Sales

SECURE TURNOVER

2

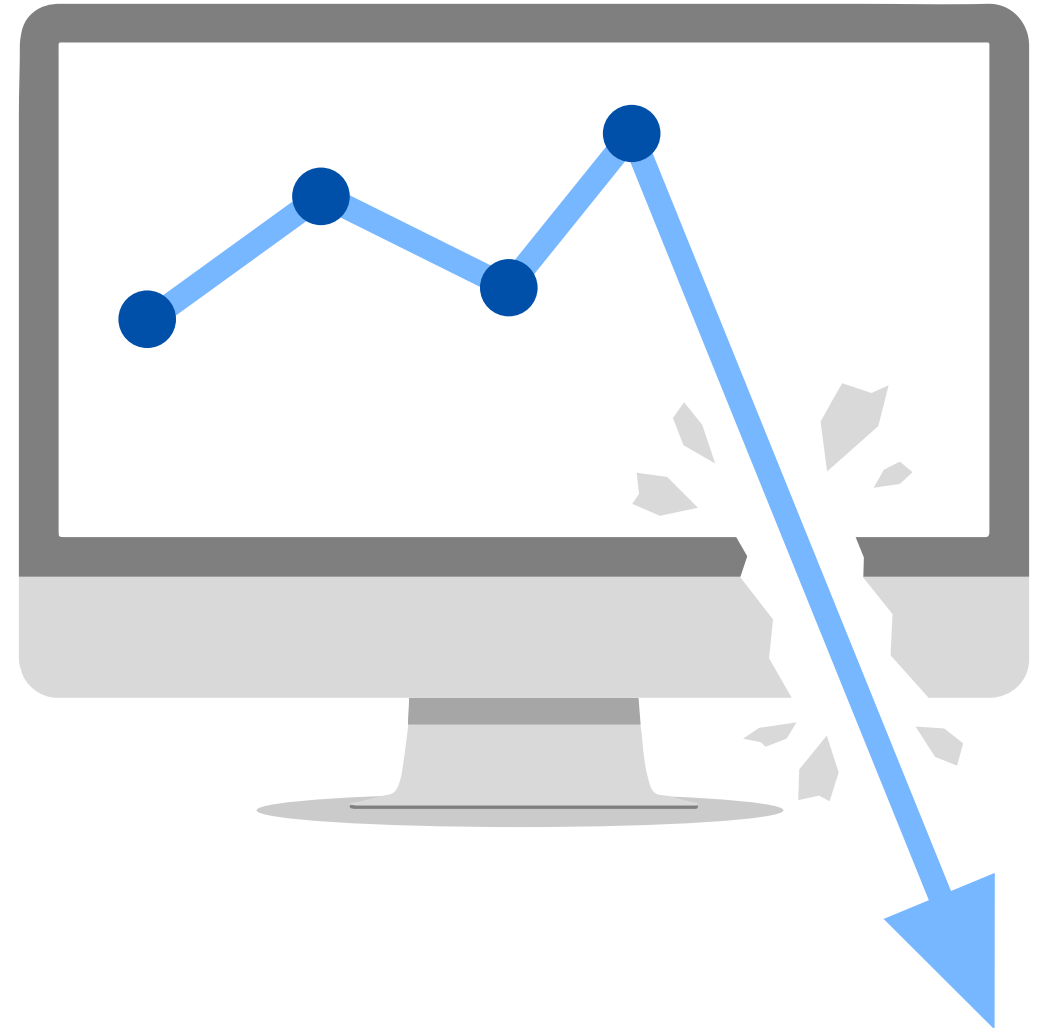
Decreasing Quality

SUPPLY CHAIN EFFICIENCY

3

Increasing Service

UNIQUE SELLING POINT





01 Kick-off

02 Concept phase

03 Tailwind Shipping Lines

04 Departure

05 TWS Today



Kick-off project „Panda“

October 2021



First conception

November 2021



Foundation of own carrier with tailor made software

March 2022



First booking & maiden voyage

July 2022



28 Employees
Fleet of 6 Vessels

October 2023

Reliable

Simple

Together



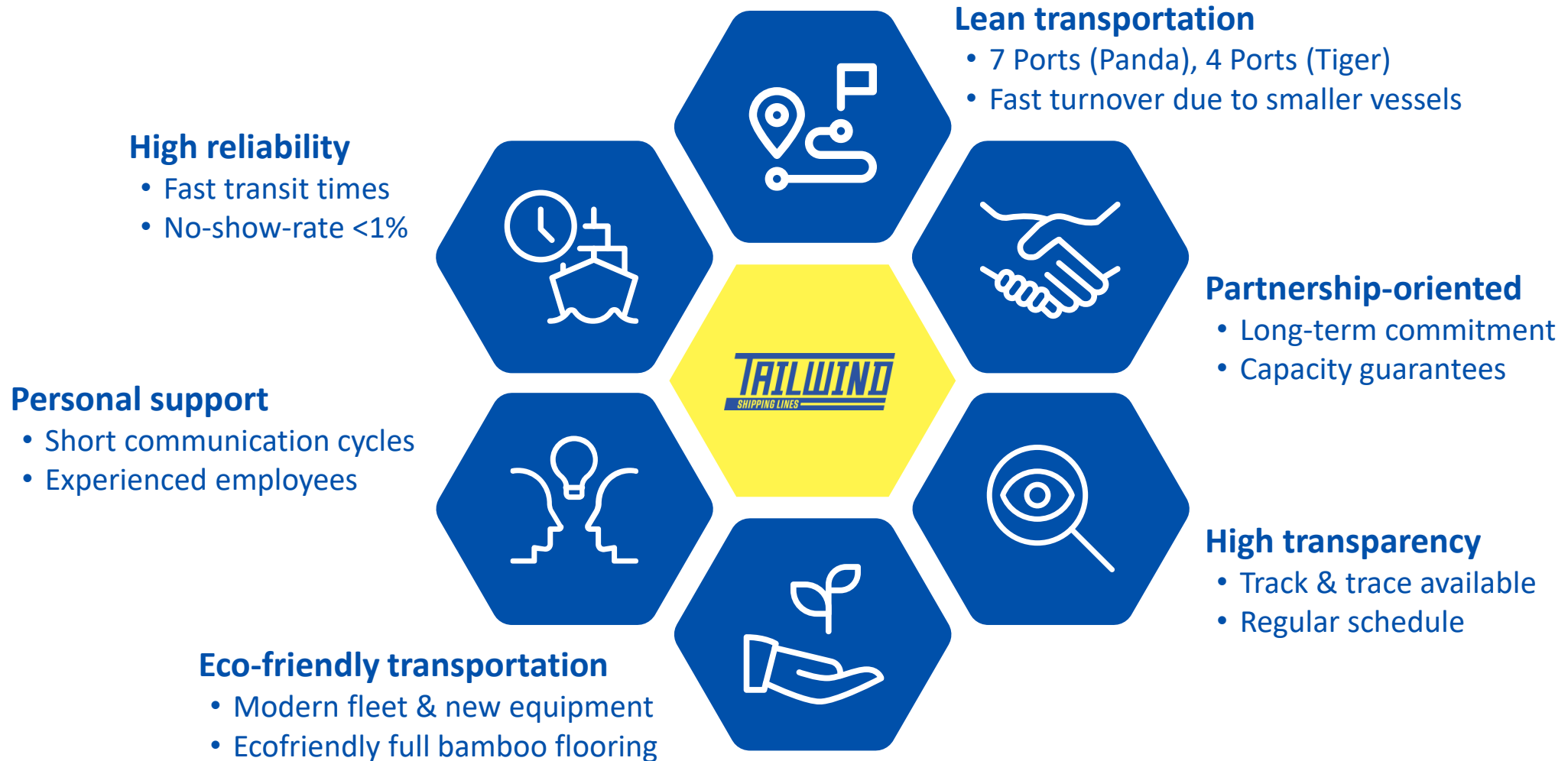
Da Chan Bay

Koper

100% - fast

Service Overview





What does speed and reliability mean for your supply chain?



IMPROVE TRADE FINANCE

- Reduce capital commitment
- Improvement of cash flow
- Lower interest cost



INCREASE SERVICE LEVEL

- Prevent out-of-stock situations
- Improving order management
- Improvement of ontime deliveries



REDUCE INVENTORY

- Reduction of buffer stock
- Reduction of stock in transit
- Improved inventory planning



Online and Digital Services



Online Platform
TRACK & TRACE



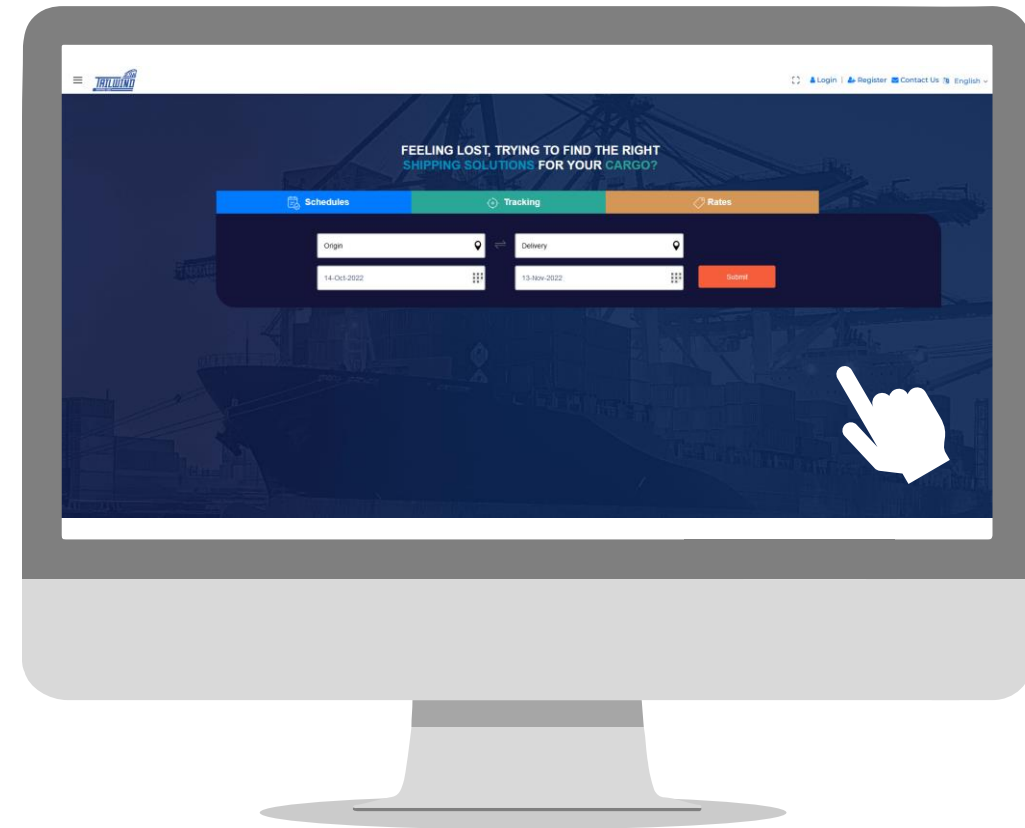
Online Platform
SCHEDULE



Setup available
API Application Programming Interface



Setup phase for Temp and GPS
Interoperable Smart Reefer



ISO Dry Container

- 5.500 x 20'GP and 15.750 x 40'HC
- All new build units from 2022
- Container with Full Bamboo Floor Covering

Reefer Container

- 300 x 40'RH Container
- Thermo King Magnum Plus
- Reefer Monitoring 24/7 via Modem

45'PW Container

- 2.000 x 45'PW Container
- Pallet Wide for 33 Europallets per Container
- Only on Tiger Service



Asia



📍 China

MOOV Logistics / KB Liner

Mail: tailwind.ga@kblinersh.com

Contact Person: Lynn Lv

Tel.: +86 18512178723

📍 Bangladesh

MOOV Logistics / Inotrans

Mail:

santa@unitransbd.com

nazneen@unitransbd.com

l.lynn@kblinersh.com

Europe



📍 Barcelona, Spain

Martico



Mail: consignbcn@martico.es

Contact Person: Joseph Santo

Tel.: +34 935114045

📍 Rotterdam, Netherlands

EuroNordic



Mail: tailwind.rotterdam@euronordic.nl

Contact Person: Remco Visser

Tel.: +31 0180894294

📍 Koper, Slovenia

Interagent



Mail: interagent.line@intereuropa.si

Contact Person: Marko Hostnikar

Tel.: +38 656641617

📍 Limassol, Cyprus

Lavar



Mail: forwarding@lavarshipping.com

Contact Person: Andreas Synnos

Tel.: +357 25258800



The background consists of a dense stack of blue shipping containers. Each container has white text and yellow warning labels. The text on the containers includes 'TALLIND' in a stylized font, 'UNIT45.com', and various technical specifications such as 'MAX GROSS', 'NET', and 'CU. CAP.'. The yellow labels prominently display 'CAUTION 9'6" HIGH'. The overall scene is a repetitive pattern of industrial equipment.

*We add value to
your cargo.*

*Reliable.
Simple.
Together.*