

A map of South Eastern Europe and Italy is shown in the background. A white rectangular box is overlaid on the map, containing the text 'TRAIN EXPERT' in large, bold, blue and red letters. Below this, a blue arrow points to the right, followed by the text 'Facilitates Rail Transports' in black.

TRAIN EXPERT

Facilitates Rail Transports

**Rail Freight Solutions
Across South Eastern Europe and Italy**

**we try to facilitate
the rail transports**

About Train Expert

Train Expert is a rail freight forwarder specialised in the transport of cereals with 40 years of experience in wagon hire and rail freight forwarding.

Train Expert also owns wagons and operates a fleet of hired wagons and bulk containers



About Train Expert

In addition to cereals, we mainly transport edible oils, LPG, scrap iron, molasses and other raw materials



About Train Expert

We work closely with many railway terminals with which we have developed new traffic flows, such as Bagnolo Mella, Piadena, Padua etc...



TRAIN EXPERT
Facilitates Rail Transports

Truck Distribution

Where required, we handle the distribution of grain by trucks to the end consumer.

We are also developing full trains carrying containers of grain and palletised goods or bales of waste as return freight.





**Ukrainian
Mediterranean
Corridor**

**Over the years we have developed
transport services between
Italy and Ukraine.**



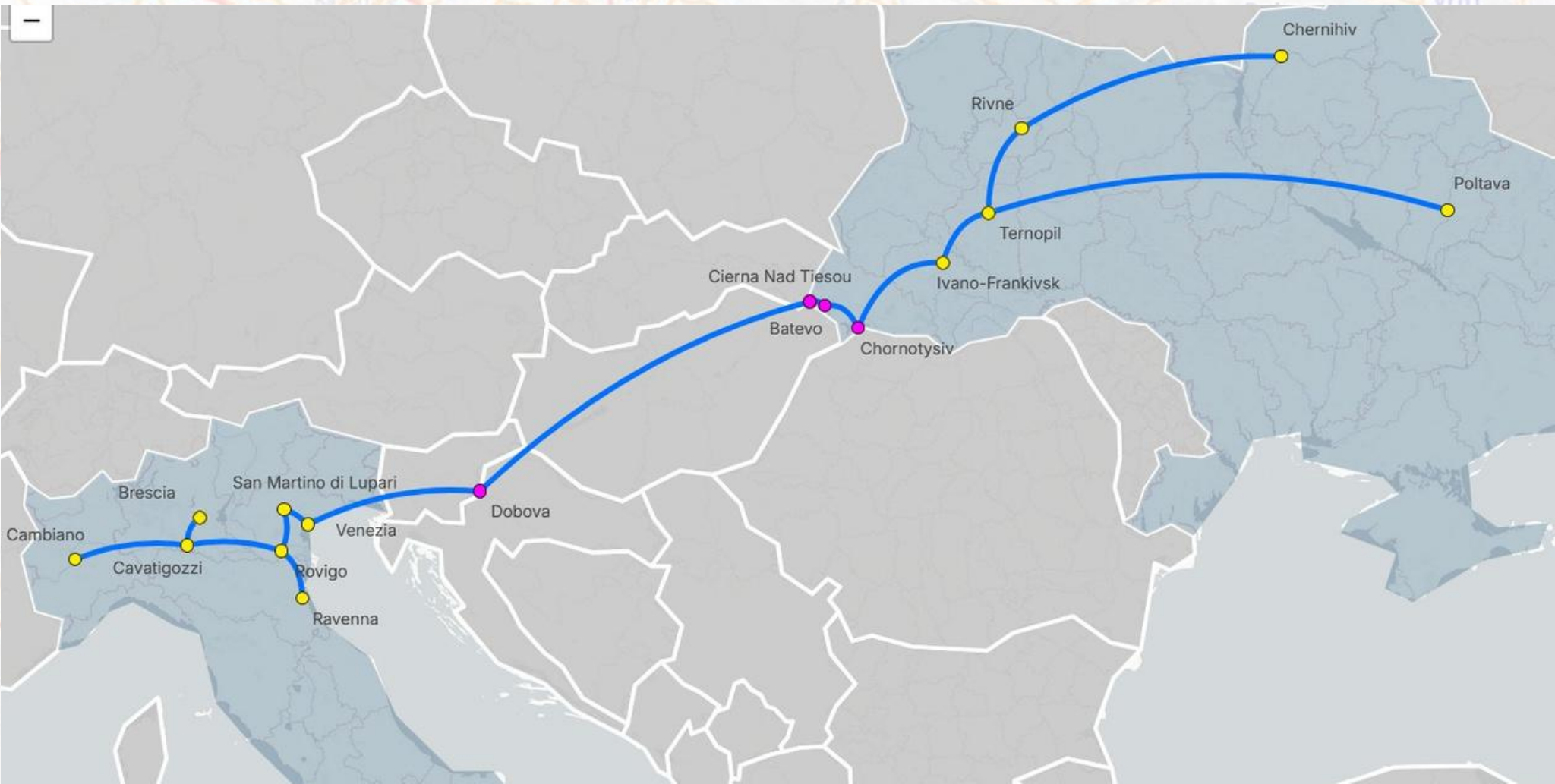
**We have created
the Ukrainian – Mediterranean – Corridor platform
www.UMC-Logistics.com**

TRAIN EXPERT
Facilitates Rail Transports



Ukrainian Mediterranean Corridor

We connect various Italian and Ukrainian inland terminals to build multi-product full-train flows more efficiently and quickly.



Our services

We provide transport services to companies such as Rom-Rail (Mercitalia Group)  Rom-Rail for the transport of cereals.

We also represent the interests of the railway company Ecco-Rail  for which we manage Italian operations, particularly from the port of Trieste, from where depart approximately 30 round-trip trains per week.



TRAIN EXPERT
Facilitates Rail Transports

Our services

In Italy, we work with more than 10 different railway companies, which allows us to offer great flexibility for the collection and delivery of trains from the Villa Opicina and Tarvisio border crossings



etc...



Optimization of Rail Transport

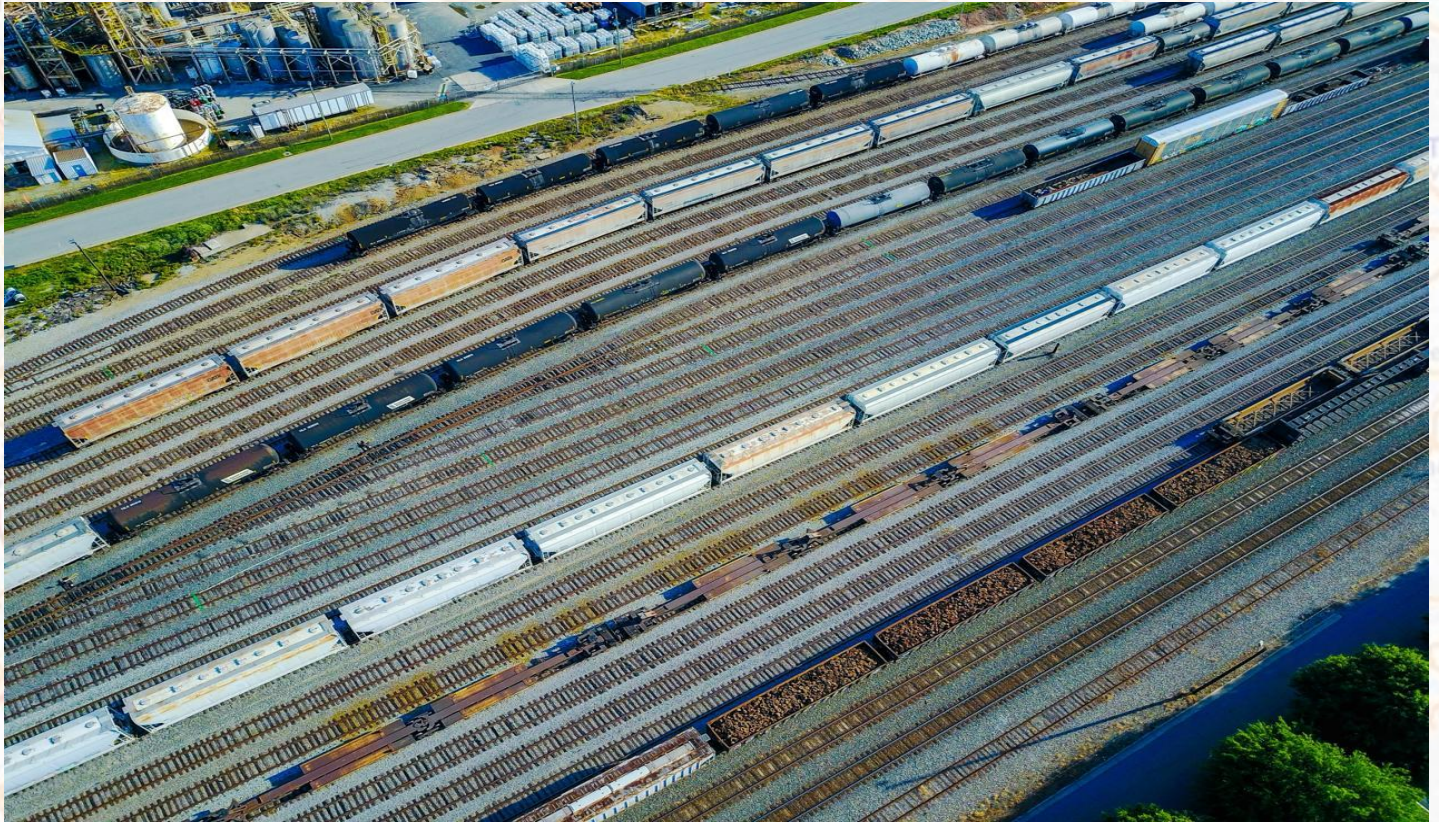
In our grain sector, we work mostly with **spot trains**



We load in abt. 20 open-air stations in Croatia (see above map), 30 in Hungary, 10 in Serbia, 15 in Romania, etc...

Optimisation of Rail Transport

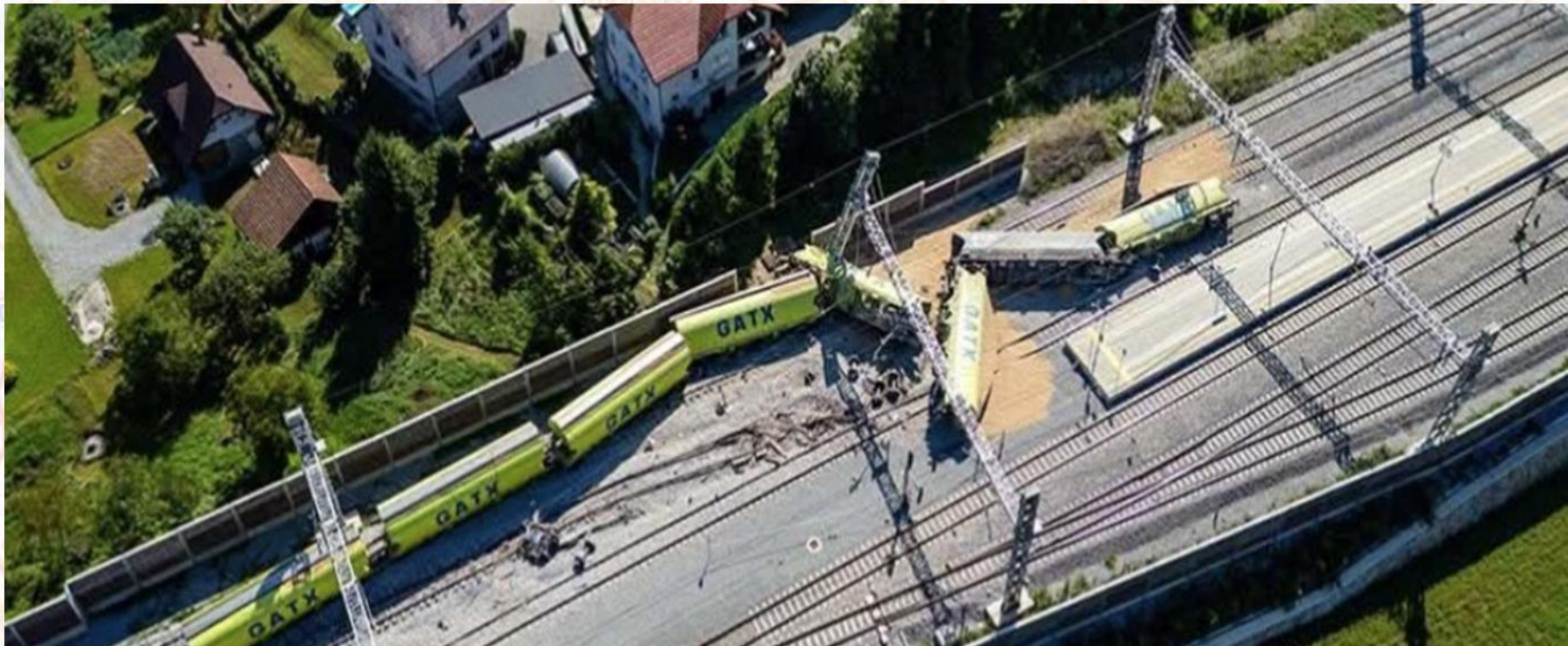
Train scheduling is absolutely impossible, also due to the jungle of unloading slots at Italian grain terminals.



In this sector, optimisation is achieved thanks to the volumes that allow us **to swap** one train for another depending on train delays.

Optimisation of Rail Transport

- Train delays are caused by problems with loading and unloading,
- strikes (we are in Italy),
- track works, transit blockages due to ongoing works
- weather-related issues such as snowfall, frost, floods, storms, etc.
- and, of course, human failure.....



Optimisation of Rail Transport

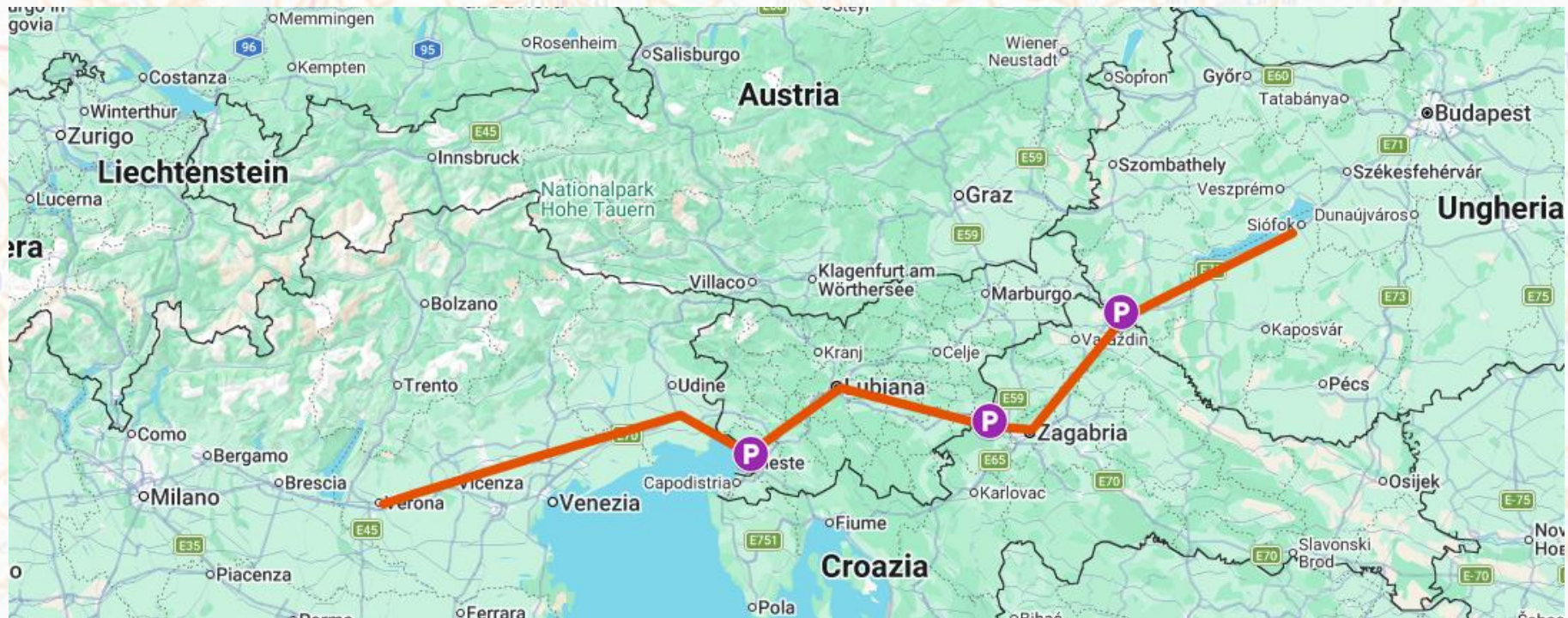
Optimisation of rail transports these days is not an easy task.



Every day, several times a day, we have to reschedule almost all trains – a nightmare for our colleagues in planning

Optimisation of Rail Transport

That said, as we mainly organise international trains which cross, up to three different borders in a single day – where both locomotives and drivers are changed –



we believe that optimization can only be achieved when we'll be able to cross each country with the same interoperable locomotive and the same crew!

Optimization of Rail Transport

Buffers must also be developed for the temporary parking of trains at borders, which will make it easier to manage delays and critical issues



This is Villa Opicina border station, RFI has cut and taken out of service around 20 tracks to save on maintenance costs....

That's our point of view



TRAIN EXPERT

Facilitates Rail Transports

**THANK
YOU!**