



# EUROPEAN RAIL CAPACITY OFFER

IDEO by ID LOGISTICS

2026



# SUMMARY

---

<b>01</b>	NETWORK	P.03
<b>02</b>	LOADING / DELIVERY AREAS	P.05
<b>03</b>	BUSINESS CASE	P.06
<b>04</b>	WAGONS	P.07
<b>05</b>	TIMETABLE	P.08
<b>06</b>	IDEO RAIL MANAGEMENT	P.09
<b>07</b>	INPUTS NEEDED TO QUOTE	P.10
<b>08</b>	RAIL BENEFITS	P.11

# RAIL NETWORK

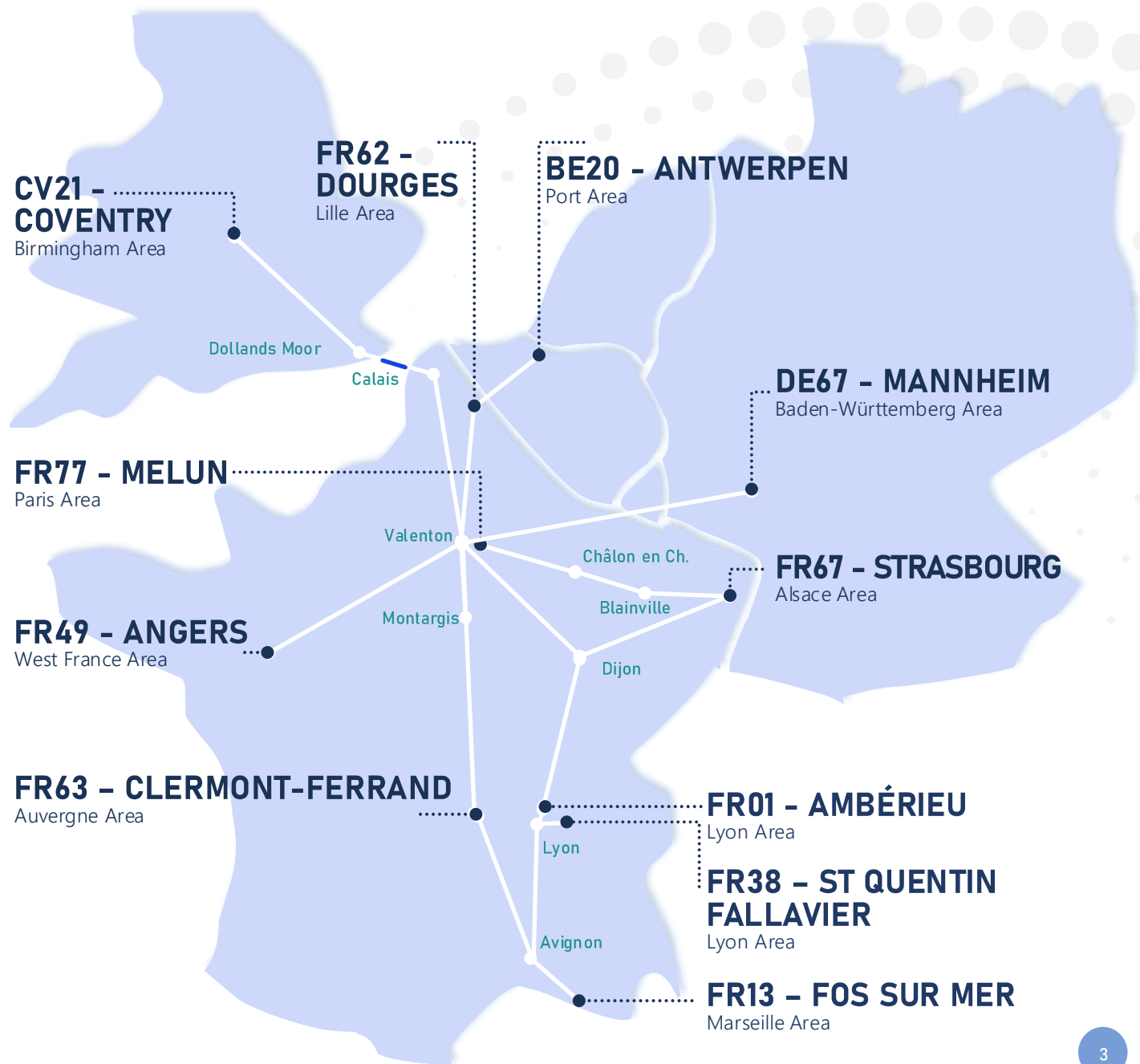
**30**  
trains per week

**807**  
wagons per week

**1 092**  
FTL saved per week

**2 095**  
tCO<sub>2</sub> saved per week

LOADING	DELIVERY	TRAIN / WEEK	WAGONS / TRAIN	PALS 80*120
Antwerpen	Ambérieu	3	28	1 288
Dourges	Ambérieu	3	30	1 380
Fos s/ Mer	Ambérieu	5	33	1 518
Coventry	Amb & Clerm-Fd	7	21	1 260
Mannheim	Clermont-Fd	6	28	1 288
Fos s/ Mer	Clermont-Fd	1	8	368
Dourges	Clermont-Fd	2	10	540
Melun	Strasbourg	3	33	1 518
Angers	Strasbourg	3	28	1 288
SQF	Strasbourg	3	28	1 288



# LOADING / DELIVERY AREAS

## MEANS OF LOADING & DELIVERY

### FULL TRAIN

Through your rail-connected terminal inside your plant



### SINGLE WAGON

Through your rail-connected terminal



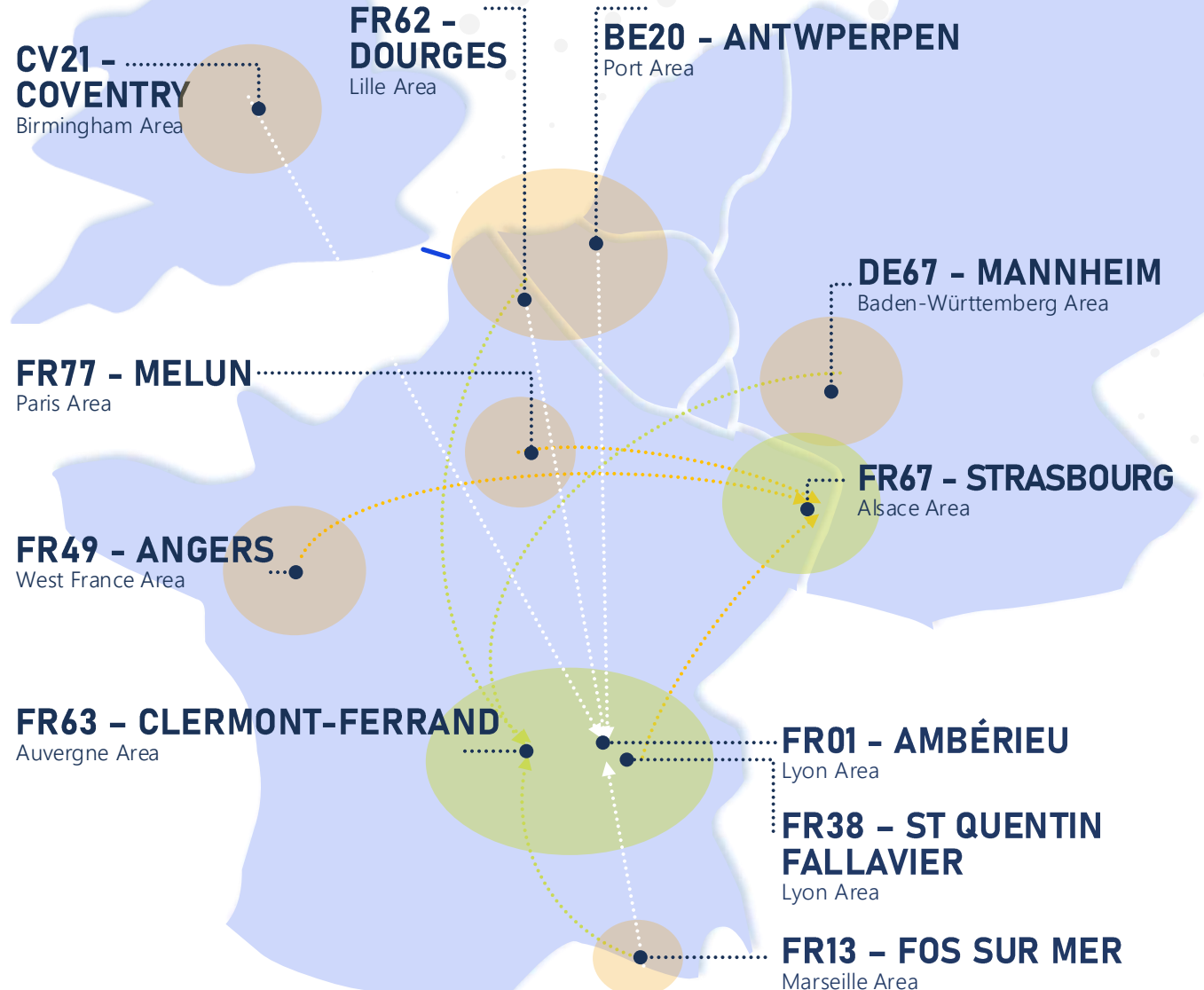
### ROAD FTL

Cross-dock through our platforms



**Loading**  
Areas

**Delivery**  
Areas



# BUSINESS CASE



# A LARGE FLEET OF CONVENTIONAL WAGONS

## WAGONS



### CARACTERISTICS

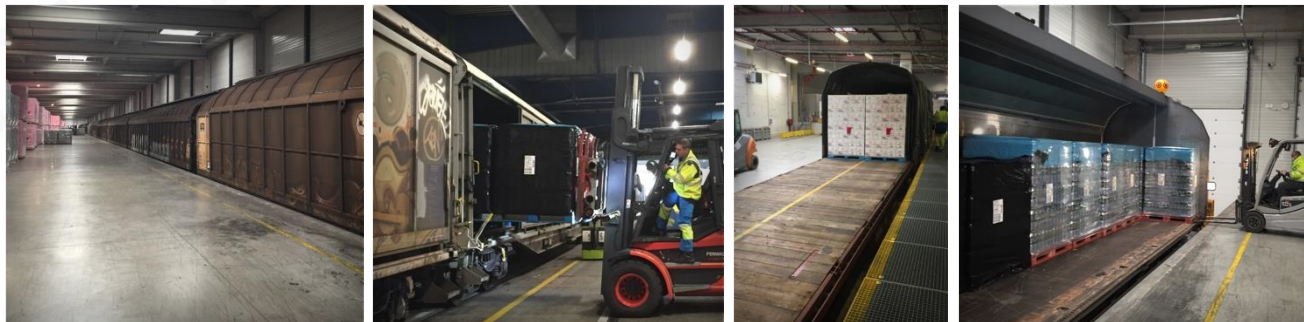
WAGON TYPE	PAYLOAD (t)	LENGTH	WIDTH	HEIGHT	100*120 pals eq.	80*120 pals eq.
RILS	56.00 t	18.50 m	2.40 m	2.50 m	36 pals	46 pals
HABILS H87	53.50 t	18.56 m	2.60 m	2.41 m	36 pals	46 pals
HABILS H88	52.90 t	19.34 m	2.60 m	2.200 m	36 pals	48 pals
HFIRRS	62.50 t	27.00 m	2.62 m	2.40 m	48 pals	60 pals
HABIINS	63.00 t	23.24 m	2.80 m	2.00 m	42 pals	54 pals



### WAGONS



### HANDLING



# TIMETABLE

## SCHEDULE & TRANSIT-TIME

AREAS		DEPARTURE		ARRIVAL	
LOADING	DELIVERY	DAYS	HOURS	DAYS	HOURS
ANTWERPEN	AMBERIEU	Tue-Thu-Sat	13:56	Wed-Fri-Sun	06:37
DOURGES	AMBERIEU	Mon-Fri	15:15	Tue-Sat	06:59
FOS S/ MER	AMBERIEU	Mon-Tue-Wed-Thu-Fri	23:00	Tue-Wed-Thu-Fri-Sat	12:30
COVENTRY	AMBERIEU	Tue-Thu-Sat	14:45	Thu-Sat-Mon	04:13
MANNHEIM	CLERMONT-FD	Mon-Tue-Wed-Fri-Sat Thu	19:30 19:30	Wed-Thu-Fri-Mon-Tue Sat	12:57 18:30
FOS S/ MER	CLERMONT-FD	Mon	23:00	Wed	/
DOURGES	CLERMONT-FD	Tue-Thu	/	Thu-Sat	/
MELUN	STRASBOURG	Mon-Wed Sun	22:30 17:07	Tue-Thu Mon	10:30 10:30
ANGERS	STRASBOURG	Mon-Thu	20:58	Tue-Fri	14:09
SQF	STRASBOURG	Tue-Thu-Fri	09:10	Wed-Fri-Sat	10:07

## TRANSIT TIMES:

**D+1:**

**Antwerpen – Ambérieu**

**Dourges – Ambérieu**

**Fos sur Mer – Ambérieu**

**Fos sur Mer – Clermont-Ferrand**

**Dourges – Clermont-Ferrand**

**Melun – Strasbourg**

**Angers – Strasbourg**

**St Quentin Fallavier - Strasbourg**

**D+2:**

**Coventry – Ambérieu**

**Mannheim – Clermont-Ferrand**

# IDEO – A RAIL CONTROL TOWER

ONE STOP SHOP: YOUR SINGLE POINT OF CONTACT



**+1 200**

wagons managed  
Fleet optimization & synthetic  
return rate



**Real Time**

Geolocation visibility for each wagon  
Proactive monitoring



**Full service**

Heavy & Light maintenance  
Root cause analysis  
Proactive action plans



**Railway  
companies**

Partnership with major  
European railway companies.



**Network**

Transport plan conception  
European Coverage  
Sizing & process  
Procurement



**Dashboard**

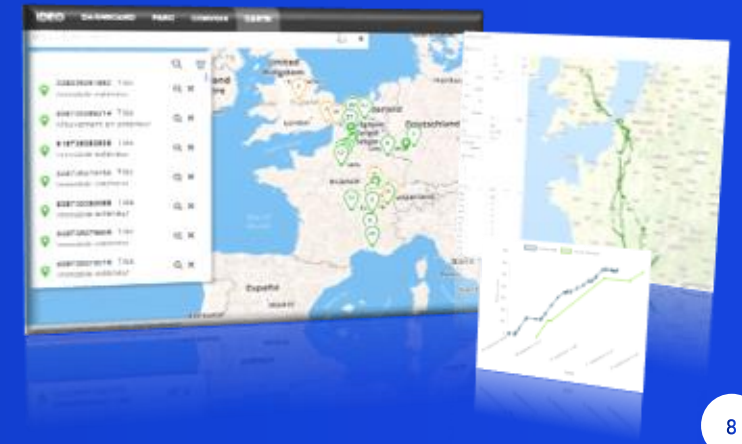
Full real time  
& independent KPI's  
for fleet, maintenance,  
performance, and costs.



**TAILOR-MADE APPROACH**

For each request, we can adapt  
and adjust the capacity to your  
volumes, goods and specs

- Train schedules / transit-time
- Number of train / capacity
- Type of wagons
- Direct access to your rail-connected terminal
- Cross Dock Truck to Train
- Pre & post carriage
- Estimate the CEE French government support



# REQUEST FOR QUOTATION

## MANDATORY INFORMATIONS

### PROJECT

For each request, we conduct a thorough analysis of your business case, suggest tailor-made solutions adapted to your requirements, and dedicate our project teams to ensure proper implementation.



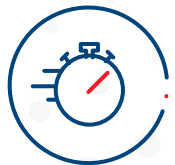
### DETAILED TYPE OF **GOODS**

Packaging, size & weight. Specific handling requirements.  
Goods not accepted: dangerous, odorous, unpacked.



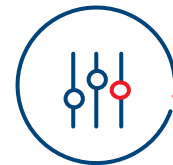
### **LOGISTIC CONSTRAINTS** OF LOADING & DELIVERY

Depending on accessibility of your plants, customers logistics constraints. We are able to organize collection & deliveries, or implement your own transport solutions.



### **TRANSIT-TIMES** SOLUTIONS DESIGNED

The number of trains varies depending to the season.  
Depending specific needs, we can adapt the organization to reach your supply-chain targets.



### **TAILOR-MADE** SOLUTIONS DESIGNED

Sizing of wagons type & fleet. Size of train & payload capacity.  
Container. Pre-Post carriage design, transit-time adaptation.

# RAIL BENEFITS

MODAL SHIFT TO RAIL: A SUPPORTED LEVER FOR CARBON REDUCTION



## SEVERAL BENEFITS TO SHIFT ROAD TO RAIL

**8**x lower emissions of harmful particles

**9**x less CO<sub>2</sub> emissions

**6**x less energy consumed



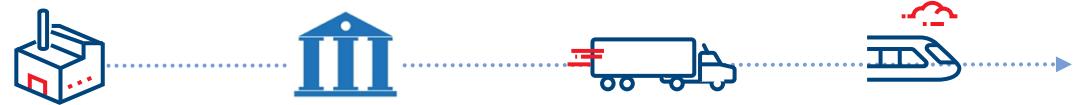
**1** Full Train = **40** Trucks 



## A SHIFT ENCOURAGED BY GOVERNMENTS

Governments are supporting shift modal from road to train, to reduce carbon emissions.

Concept is to encourage to move existing traffics from road to rail with "obliged" companies that have to offset their CO<sub>2</sub> emissions. Governments direct these obligations towards modal shift subsidies. The beneficiaries may be railway companies or shippers.



IDEO can calculate and support the implementation of the system

# THANK YOU

 **ID LOGISTICS**



55, Chemin des Engranauds  
CS 20040

13660 Orgon France  
[garaujo@id-logistics.com](mailto:garaujo@id-logistics.com)

+33 (0)4 42 110 600

[www.id-logistics.com](http://www.id-logistics.com)



EUROPEAN RAIL OFFER