

HHLA PLT Italy



HHLA

HHLA

PLT Italy

Key to HHLA PLT Italy success

Combining the strengths of the 4 partners

HHLA (75.01%)



- A leading European logistics company founded in 1885, headquartered in Hamburg
- Active in 4 segments in Europe:
 - 5 container terminals
 - Intermodal services, e.g. rail operator METRANS
 - Logistics services other than container
 - Real estate in Hamburg
- Shareholding through 100% subsidiary HHLA International

Francesco Parisi (12.15%)



- Family-led Italian logistics company, founded in 1807, headquartered in Trieste
- Active in Europe and Asia in 3 segments:
 - Freight forwarding and logistics
 - Shipping agency
 - Terminal operations experience (e.g. RoRo terminal)

I.CO.P (11.17%)



- Family-led Italian engineering company, founded in 1920, headquartered in Udine
- 80% owned by the founding Petrucco family
- Internationally constructing:
 - Bridges
 - Underpasses
 - Underground foundations
 - Microtunnels

Interporto Bologna (1.67%)



- Owned by the Municipality of Bologna, founded in 1971
- Operator of biggest freight village in Italy, located in Bologna
- Services include i.a.:
 - Railway station (soon with connection to Trieste)
 - Logistics centers
 - Customs station
 - Fuel stations

HHLA PLT Italy terminal in Trieste

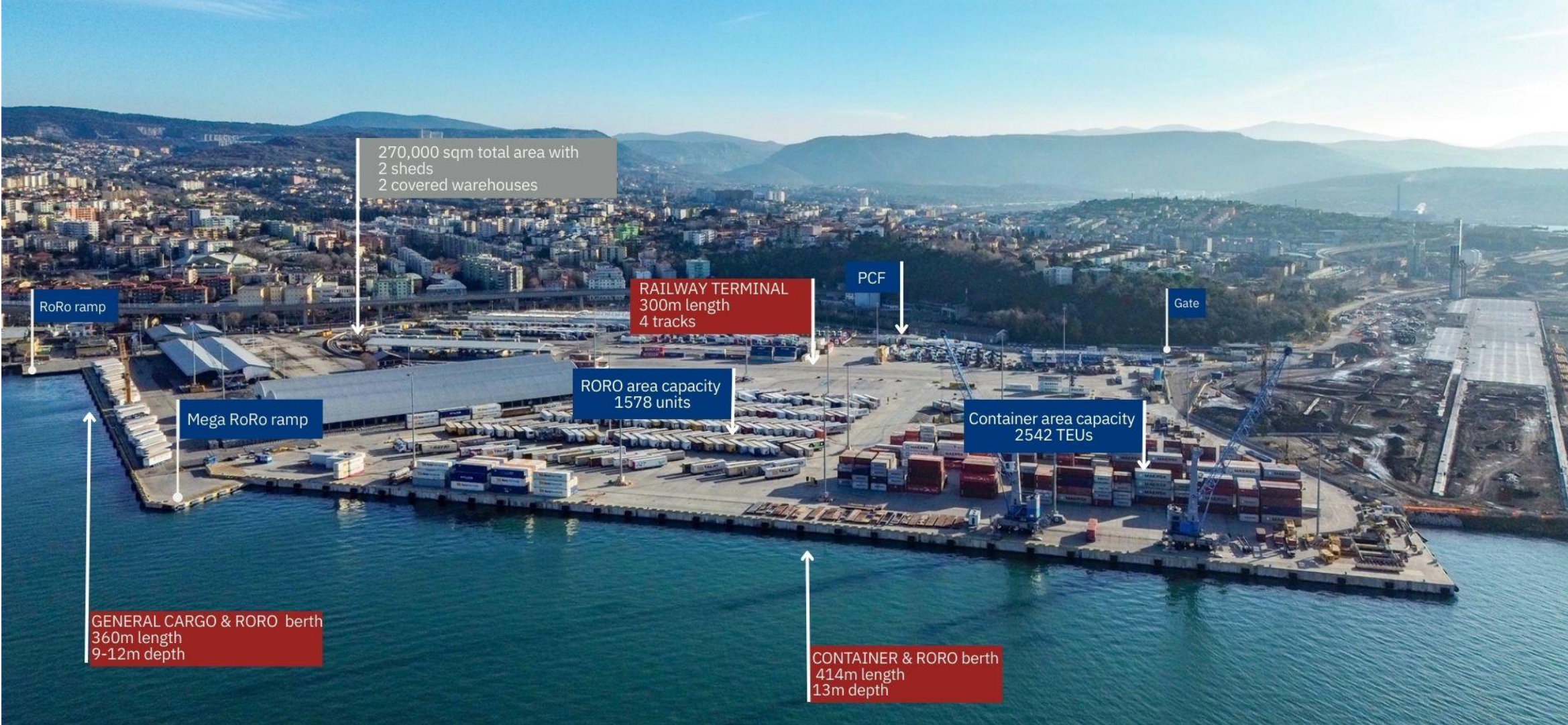
The only **common user** and **multipurpose terminal** in the **Custom Free Port** area

HHLA PLT Italy in the port of Trieste



- Construction started 2014 as PPP with Port of Trieste,
- On January 7th 2021 official entry of HHLA as majority shareholder and rebranding from PLT into **'HHLA PLT Italy'** 
- Terminal focused on:
 - General Cargo in particular aluminum, coils, timber & CFS
 - Project Cargo
 - RoRo
 - Containers
 - Rail
- **Common user terminal, open for all customers**

HHLA PLT Italy terminal overview

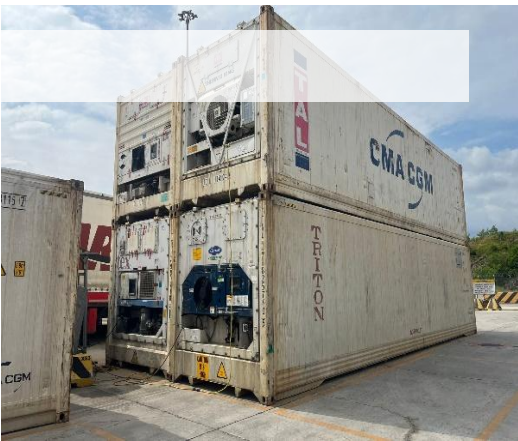


HHLA PLT Italy development

A fast growing multipurpose terminal



Dedicated in-terminal facilities and services



Dedicated and independent Border Inspection Point & Reefer Cross Docking

Developing One Shop concept for temperature-controlled cargo



Reefer:

- 140 reefer plugs installed with potential to expand
- High plugs availability ratio
- L/D reefers are around 15-20 / week, increasing trend
- Terminal dedicated BIP
- Total area of 2260 sqm:
- 3 trailers/containers inspection ramps
- 2 controlled temperature areas (+5°C) connected to 4 cold storage rooms (16.8 sqm each) for frozen and refrigerated goods
- 2 additional cold storage rooms (0°C/4°C and -20°C/0°C)

HHLA PLT Italy: a well-connected multipurpose terminal

SEA



Roro services

Ulusoy

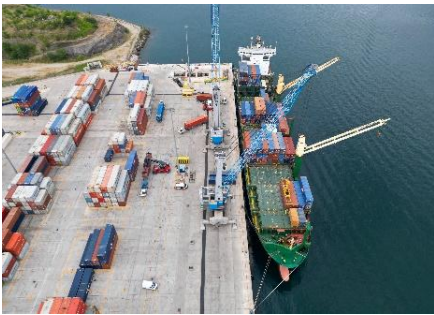
- 1 call per week fm/to Cesme/Izmir (~500 max cap)

DFDS

- 1 call per week fm/to Mersin (~500 max cap)

Grimaldi

- 4 calls per week fm/to Ambarli/Gemlik/Patras (~400 ~1000 max cap)



Container Services

MAERSK

- Rijeka Shuttle



General Cargo / Project Cargo / CFS

- 57k tons moved in 2025;
- 2 mobile harbor 125t lifting capacity, up to 200t with both;
- 2 mobile cranes with up to 65t and 52t lifting capacity;
- General cargo vessels' origin: India / Vietnam / Taiwan / Saudi Arabia / Qatar / Romania / USA / Brazil / Malaysia

HINTERLAND



Rail gateways from Trieste

- Villa Opicina
- Tarvisio
- Brennero

Rail services from PLT

(Target capacity 25/26: 27 r/t p/week)

Weekly connections

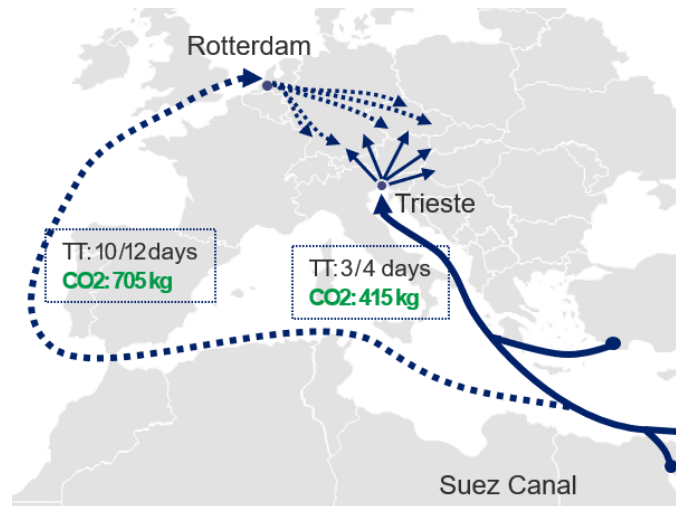
- Bettembourg
- Duisburg
- Budapest

Inducement connections

- Dunajská Streda
- Dobra – Trieste
- Rubiera

Under development

- Wels
- Bratislava
- Mosnov
- Venlo
- Melzo
- Antwerp
- Other connections to SE Europe



Rail gateways from Trieste to Europe

VILLA OPICINA

- **Strategic position** close to the border between Italy and Slovenia, linking towards Villach, Vienna and Budapest
- **Key link** for the Port of Trieste and inland terminals of FVG region with East-European countries



TARVISIO

- **Strategic position** between Italy and Austria for transporting goods through the Alps
- **Key link** connecting the Port of Trieste with important **industrial hubs** of Austria, Germany and other Central-European countries



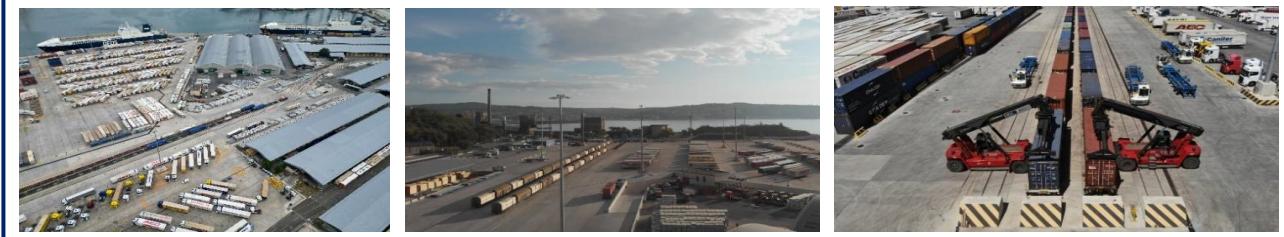
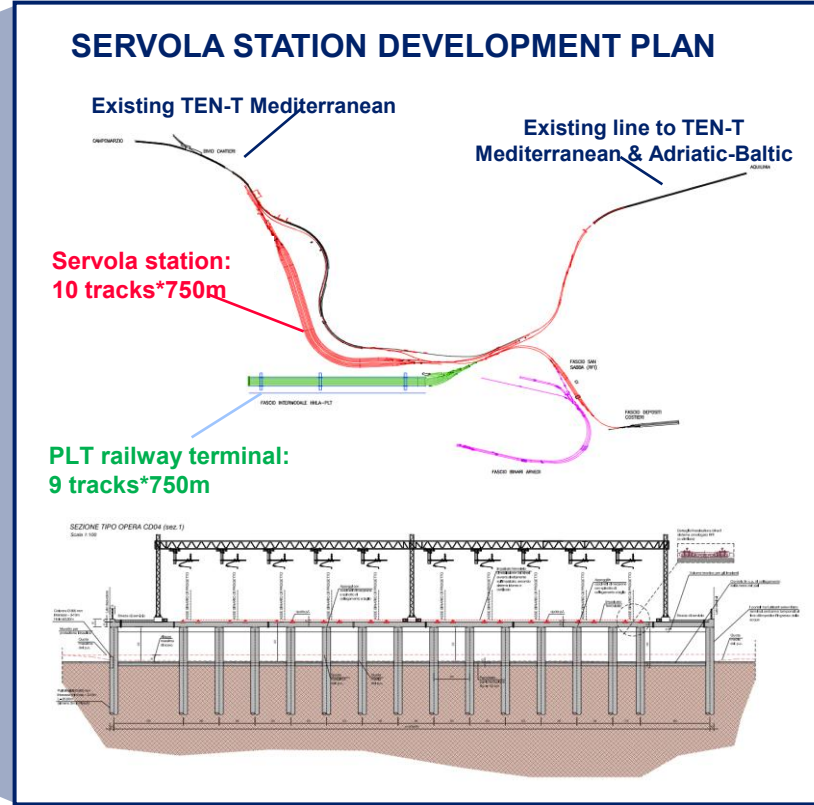
BRENNERO

- **Strategic position** between Italy and Austria for transporting goods through the Alps
- **Key link** between Italy, Austria, Germany, Central-European countries and connection with important **industrial hubs**



Intermodal growth potential of HHLA PLT Italy

More than 50% of the rail capacity available for customers with ongoing significant improvements



Large reconstruction projects within the port of Trieste planned and financed, important for PLT:

- **Night lightning activated in Aquilinia station**
- Opened direct access to Servola station freight line, with up to 10 tracks entirely dedicated to PLT to exit Trieste as an additional alternative to Campo Marzio station
- Reactivation of Aquilinia station with 8 x 750 m tracks

The proposed development combines an efficient container terminal with a high-capacity rail and road connection

Extension of PLT quay/yard:

- Capable of serving simultaneously 3 RoRo vessels, 2 deep-sea container vessels and 1 feeder vessel.

New container terminal:

- Highly automated
- Emission neutral
- Using latest technology
- Capable of serving largest container vessels
- Planned total capacity 1.6 mTEU (but further expansion possible),



New rail terminal:

- Up to 9 tracks at 750 m allowing handling of longest allowed trains
- Max. capacity > 40 / day = 280 trains / week
- Capacity of nearly 1.0 mTEU annually

New Ro-Ro berth:

- Adding a 3rd RoRo berth with dedicated yard.



-  : Existing PLT Terminal
-  : Phase 1

Public project areas:

New railway marshalling yard:

- 10 tracks dedicated to PLT terminal
- Direct connection to the national rail network with > 50% capacity available

New highway connection:

- Direct connection to highway towards Venice, Udine and Ljubljana,
- Highways around Trieste not congested.



Contacts

HHLA PLT Italy S.r.l
Via degli Alti forni snc
34145 Trieste

salesplt@hhla-plt.it