

IBS Congress, Zagreb, April 2026



**DRY
PORT
TERMINALS**

Your reliable partner in multimodal transport

Easy way to connect your supply chain from end to end

Lotesa Manojlovic, Managing Director



DPT – short video presentation

<https://youtu.be/LOcYikdglPY>

3-modal Container Terminal in Port of Dunav, Pančevo



RAIL
CONNECTION



ROAD
CONNECTION



RIVER
CONNECTION

TERMINAL POSITION

Port of Dunav, Pančevo

- Cross-section of two international corridors:
E-70 and Danube River
- Direct access to the international corridor E-75

Rail connection – Rail station Pančevo

- One of the main rail cross-sections in Serbia

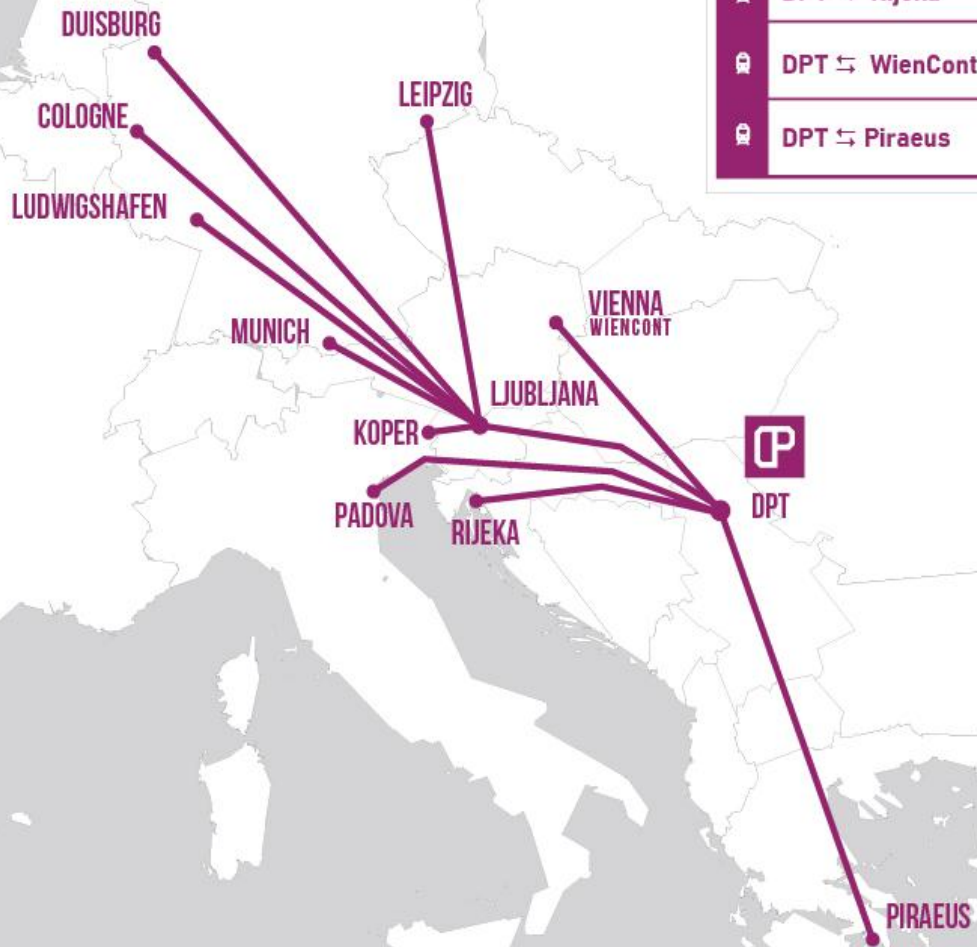
Distances from the main industrial points / cities:

- Belgrade industrial zone: 30 km
- Novi Sad: 100 km
- Smederevo: 45 km
- Bor: 225 km
- Nis: 225 km
- Kragujevac: 130 km
- Subotica: 200 km
- Zrenjanin: 75 km



TERMINAL SERVICES/CONNECTIONS

	DPT ↔ Ljubljana
	DPT ↔ Padova Interporto
	DPT ↔ Rijeka
	DPT ↔ WienCont
	DPT ↔ Piraeus



DRY
PORT
TERMINALS

DPT VIA LJUBLJANA – CENTRAL AND WESTERN EUROPE



- Direct access to German largest industrial cities
- Ljubljana hub enables efficient consolidation
- Strong export/import corridor from/to Serbia - Germany
- Stable and predictable transit times
- Expected to be launched in Q2 / May 2026/



**DRY
PORT
TERMINALS**

PANČEVO – PADOVA INTERPORTO

KEY ADVANTAGES



- Direct link to Northern Italy hub – Padova Interporto
- Efficient export from Serbia (grains, automotive, chemicals)
- Reliable import flows (consumer goods, raw materials)
- Cost-effective solution
- Expected to be launched in Q3 2026



**DRY
PORT
TERMINALS**

KELEBIA CORRIDOR – KEY ADVANTAGES

Strategic route

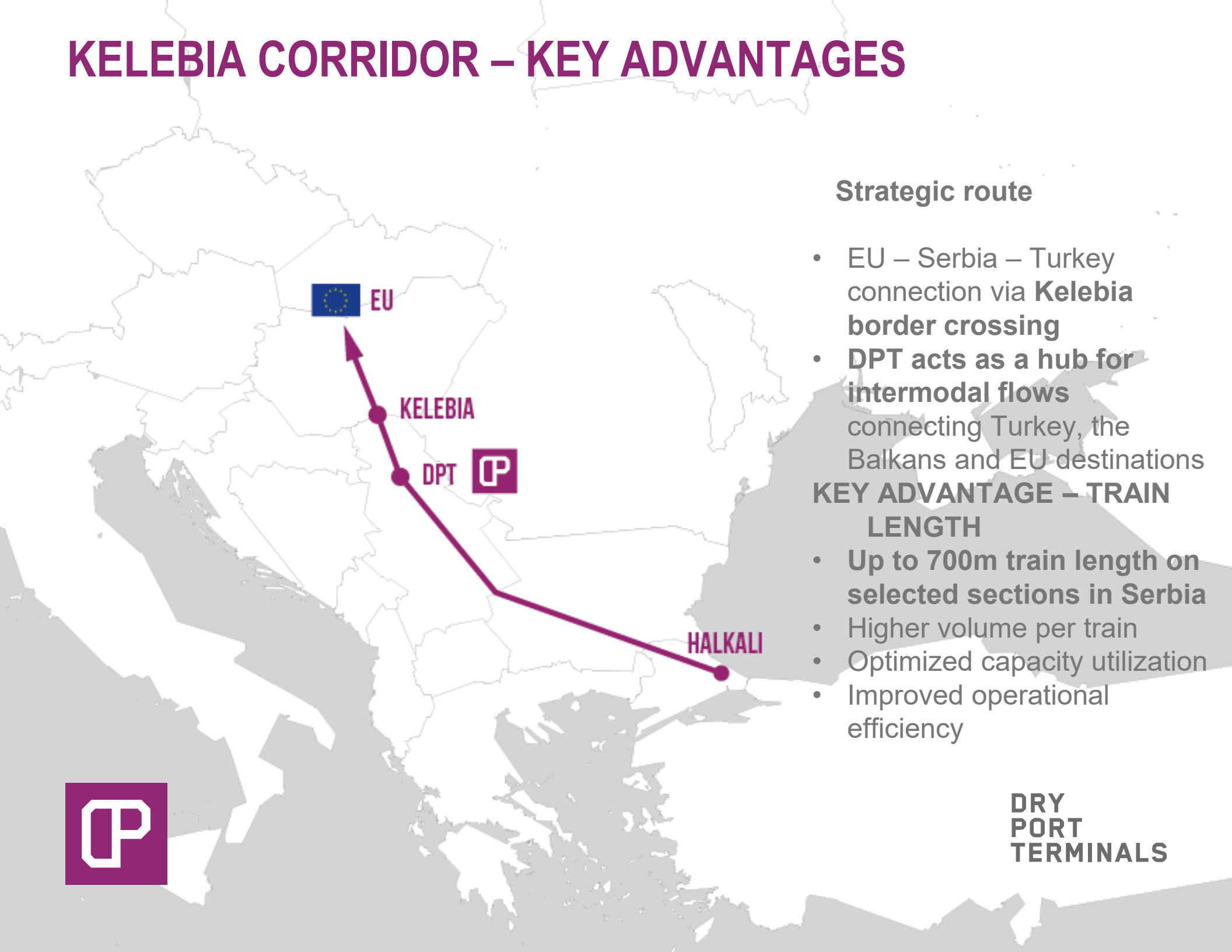
- EU – Serbia – Turkey connection via **Kelebia border crossing**
- **DPT acts as a hub for intermodal flows** connecting Turkey, the Balkans and EU destinations

KEY ADVANTAGE – TRAIN LENGTH

- Up to 700m train length on selected sections in Serbia
- Higher volume per train
- Optimized capacity utilization
- Improved operational efficiency



**DRY
PORT
TERMINALS**



Largest economical operators near DPT terminal





DRY
PORT
TERMINALS

Greatest exporters/importers near DPT terminal



LINGLONG TIRE

Tyres production



Petrol production



Chemical Industry

BOSCH



Technology & Services



Processing & Packaging



Pharmacy



HIP

PETROHEMIJA
Chemical Industry



Still Mill



Chemical Industry



Copper Mining



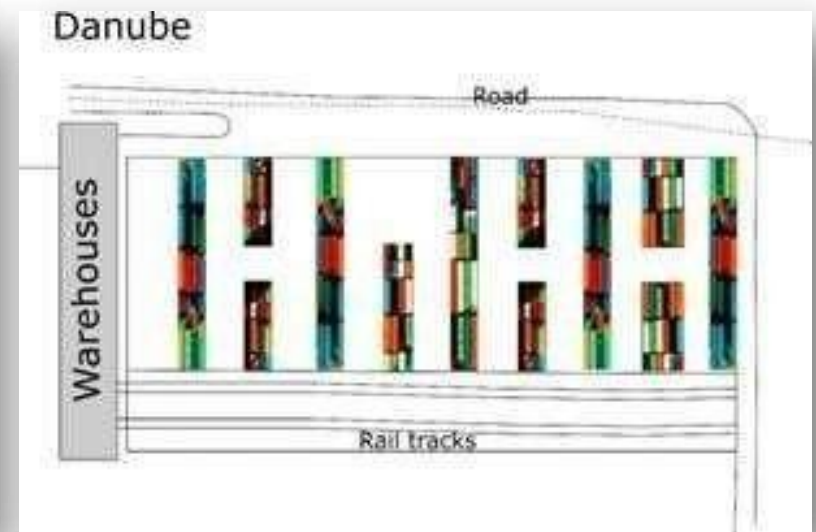
Appliances



TERMINAL INFORMATION

Container terminal area: max 33.000m² up to 3300TEU

- Rail tracks: 2 x over 650m – one block train/ one shunting operation
- Dedicated shunting locomotive
- Marshaling yard 4,5km from terminal
- Three rail tracks within terminal: several trains under operation at the same time
- Separated traffic connection and operation: rail/ road/ terminal
- Public customs warehouse area - Customs office within the terminal
- Working hours: Monday – Friday: 08:00h – 21:00h, Saturday: 08:00h – 16:00h
- Secured area: Video surveillance, guards and fence



MACHINERY AND EQUIPMENT

- 2 Reach Stackers

Kalmar 45 t – Intermodal Reach Stacker



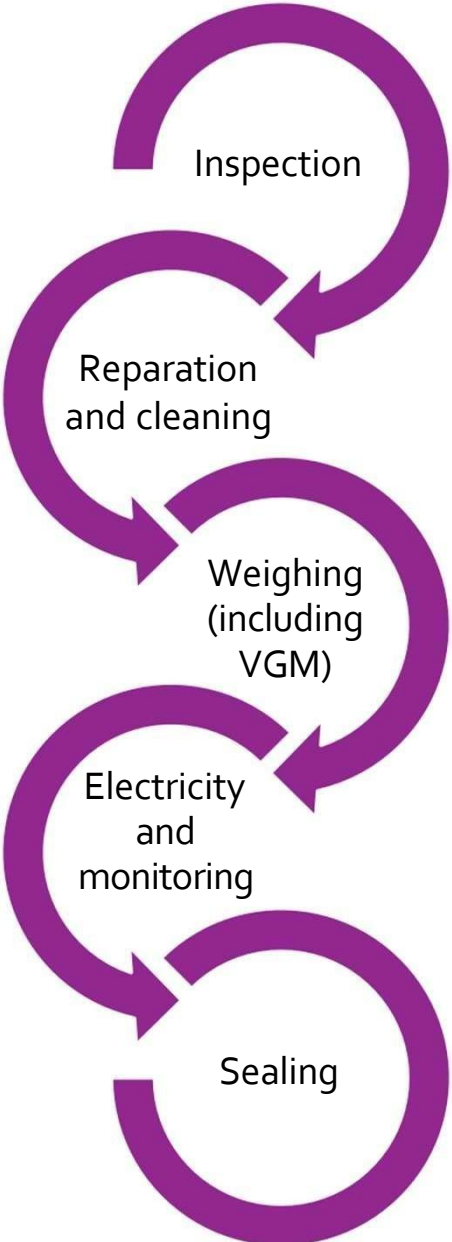
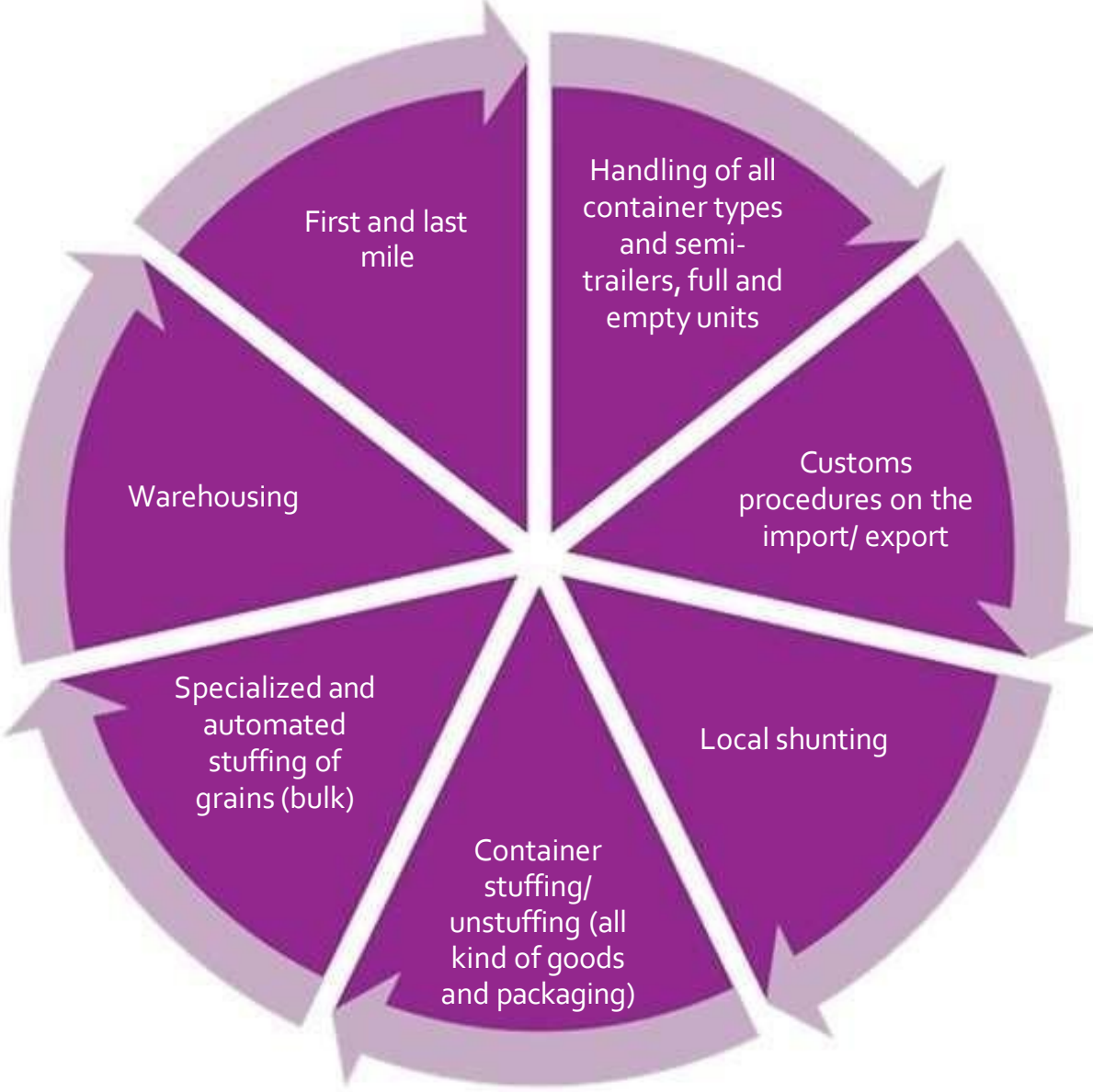
Fantuzzi 45 t – Top lift



- 32x RFR electricity plugins
- Heavy lift forklifts, stuffing and unstuffing equipment (3t – 25t)
- Shunting locomotive



TERMINAL SERVICES



ALL THE FOLLOWING CONTAINER TRANSPORT SERVICES

HANDLING OF DANGEROUS GOODS

DPT is open for the handling and temporary storage, up to 48h, for the following classes of ADR/RID: 2, 5.1, 5.2, 6.1, 8 and 9.



**DRY
PORT
TERMINALS**

**DPT WELCOMES
RID/ADR GOODS
FROM 11th DECEMBER 2023**



BULK GRAIN STUFFING EQUIPMENT

- As we always have an eye on the market in Serbia and region, we have detected a need for a unique service on Serbian market: fully automated loading system for bulk shipments (Container loader with tilter).
- Our terminal is the first in Serbia that has at its disposal a container grain stuffing equipment.
- Loading capacity 15minutes per container (all in service)



ADVANTAGES:

- One point HUB = cost effectiveness
- All in service for loading bulk grain shipments; 4 x cntrs per hour
- 100% utilization of container capacity
- Flexibility /minimum load 25 t / one container
- Suitable for different types of bulk products
- Simple and flexible door to door solutions to exporters and end user
- 0% quantity loss
- Fully secure process
- VGM certified
- Competitive price per tone
- Full highend export logistic solution

LOADING PREPARATION FOR DIVERSE BULK PRODUCTS

LINER BAG ADVANTAGES:

- Wide opening
- PP fabric coated on one side,
- Reinforced material at the door gable,
- Environmentally -friendly, suitable for the transport of food according to EU regulation
- Safe for container transportation
- Simple loading and unloading process
- Loading bulk
- Cargo protection
- Lower packaging price per tone
- Quick and flexible installation
- Moisture control during trip
- Designed for transit times up to 60 days



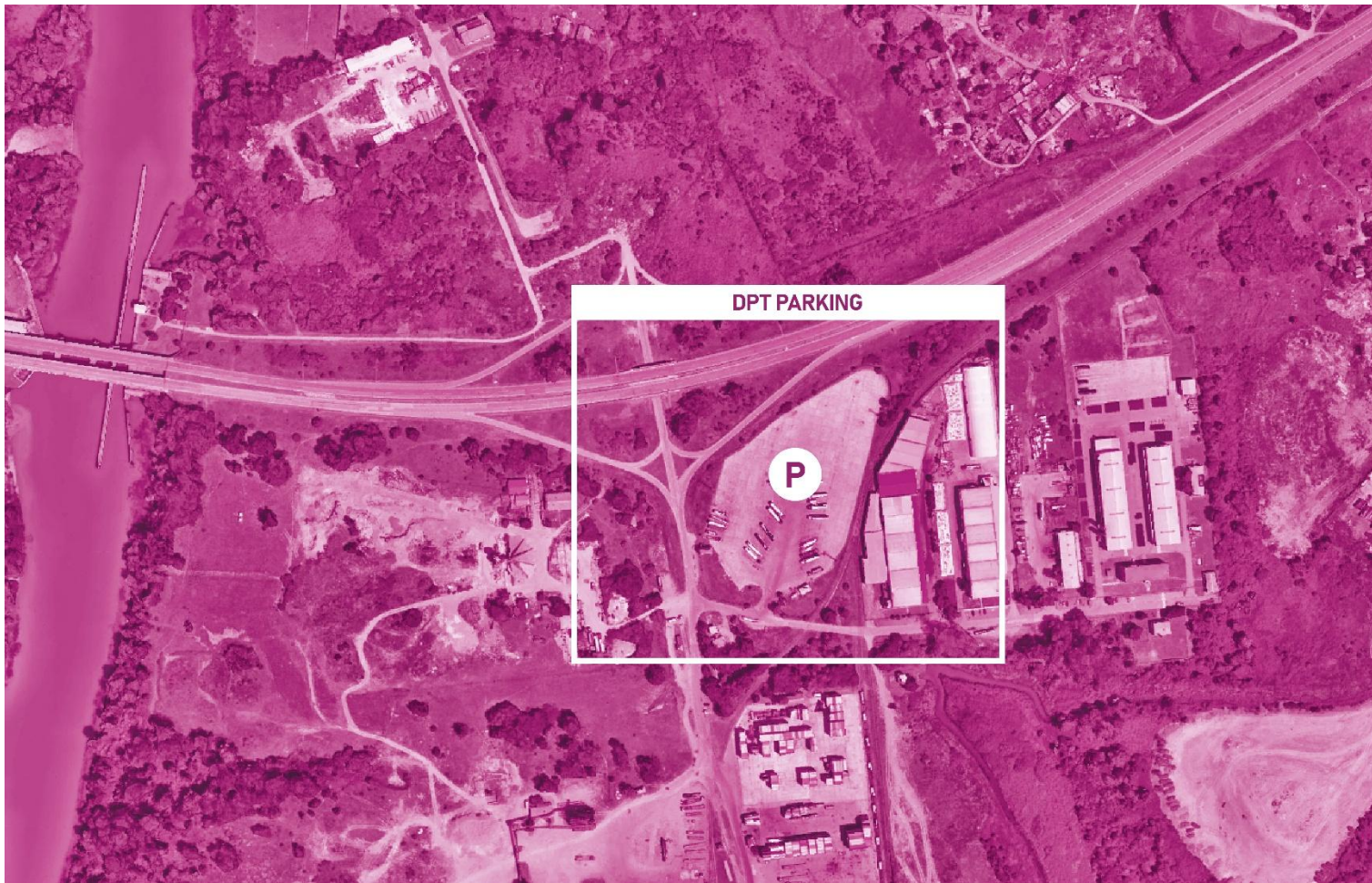
CONTAINER LOADER WITH TILTER AT WORK:

<https://youtu.be/zBVib-D4Mig>



PARKING LOT

Within the terminal, there is a truck parking area with a capacity of 200 parking spaces.



FIRST AND LAST MILE DELIVERY

In order to provide full logistics service, we offer first and last mile delivery organization.

We have established a trusted cooperation with more than 50 transport companies which have in their possession more than 100 truck trailers.



**DRY
PORT
TERMINALS**

Thank you for your attention.

We are at your disposal at:
office@dpterminals.rs